

Macprudential Policy,
Countercyclical Bank Capital Buffers and Credit Supply:
Evidence from the Spanish Dynamic Provisioning Experiments

Gabriel Jiménez
Banco de España
PO Box 28014, Alcalá 48, Madrid, Spain
Telephone: +34 91 3385710, Fax: +34 91 3386102
E-mail: gabriel.jimenez@bde.es

Steven Ongena
University of Zurich, Swiss Finance Institute and CEPR
Plattenstrasse 14, 8032 Zürich, Switzerland
Telephone: +41 44 6342951, Fax: +41 44 6344903
E-mail: steven.ongena@bf.uzh.ch

José-Luis Peydró *
ICREA-Universitat Pompeu Fabra, CREI, Barcelona GSE and CEPR
Ramon Trias Fargas 25, 08005 Barcelona, Spain
Telephone: +34 93 5421756, Fax: +34 93 5421746
Email: jose.peydró@upf.edu

Jesús Saurina
Banco de España
PO Box 28014, Alcalá 48, Madrid, Spain
Telephone: +34 91 3385080, Fax: +34 91 3386102
E-mail: jsaurina@bde.es

August 2015

* Corresponding author. We thank four anonymous referees, Tobias Adrian, Ugo Albertazzi, Franklin Allen, Laurent Bach, Olivier Blanchard, Bruce Blonigen, Patrick Bolton, Markus Brunnermeier, Elena Carletti, Gabriel Chodorow-Reich, Hans Dewachter, Mathias Dewatripont, Jordi Gali, Leonardo Gambacorta, John Geanakoplos, Refet Gürkaynak, Michel Habib, Lars Peter Hansen, Philipp Hartmann, Thorsten Hens, Anil Kashyap, Roni Kisin, Noburo Kiyotaki, Luc Laeven, Nellie Liang, Atif Mian, Frederic Mishkin, Paolo Emilio Mistrulli, Janet Mitchell, Antonio Moreno, Daniel Paravisini, Manju Puri, Adriano Rampini, Jean-Charles Rochet, Kasper Roszbach, Julio Rotemberg, Ariel Rubinstein, Lambra Sañz Vidal, Tano Santos, Amit Seru, Chris Sims, Harald Uhlig (editor), Raf Wouters, the seminar participants at the *Banco de España*, *Banco de Portugal*, Bank of Finland, Cass Business School, CEMLA-Association of Central Banks in Latin America and the Caribbean, Central Banks of Ireland and Hungary, *Deutsche Bundesbank*, ECB, EUI (Florence), Federal Reserve Board, FINMA (Bern), IMF, LSE, National Bank of Belgium, Columbia, Duke and Princeton University, and the University of North Carolina (Chapel Hill), Oregon, Oxford, and Zurich, and participants at the ACPR-Banque de France Conference on Risk Taking In Financial Institutions, Regulation and the Real Economy (Paris), AFA Meetings (San Diego), *Banca d'Italia*-CEPR Conference on Macprudential Policies, Regulatory Reform and Macroeconomic Modeling (Rome), *Banque de France* Conference on Firms' Financing and Default Risk During and After the Crisis (Paris), Becker Friedman Institute for Research in Economics at the University of Chicago Conference on Macroeconomic Fragility, CAREFIN-Intesa SanPaolo-JFI Conference on Bank Competitiveness in the Post-Crisis World (Milano), CEPR-CREI Conference on Asset Prices and the Business Cycle (Barcelona), CEPR-ESSET (Gerzensee), EEA Invited Session on New Approaches to Financial Regulation (Malaga), Fordham-RPI-NYU 2012 Rising Stars Conference (New York), Madrid Finance Workshop on Banking and Real Estate, NBB Conference on Endogenous Financial Risk (Brussels), NBER Summer Institute 2012 Meeting on Finance and Macro (Cambridge), and the University of Vienna-*Oesterreichische Nationalbank*-CEPR Conference on Bank Supervision and Resolution (Vienna) for helpful comments. Peydró acknowledges financial support from both the Spanish Ministry of Economics and Competitiveness (project ECO2012-32434) and the European Research Council Grant (project 648398). The National Bank of Belgium and its staff generously supported the writing of this paper in the framework of its October 2012 Colloquium "Endogenous Financial Risk". These are our views and do not necessarily reflect those of the *Banco de España*, the Eurosystem and/or the National Bank of Belgium.

**Macroprudential Policy,
Countercyclical Bank Capital Buffers and Credit Supply:
Evidence from the Spanish Dynamic Provisioning Experiments**

Abstract

To study the impact of macroprudential policy on credit supply cycles and real effects, we analyze dynamic provisioning, which implies pro-cyclical bank capital regulation. Introduced in Spain in 2000, revised four times and tested in its counter-cyclicality during the crisis, it affected banks differentially. Accessing an exhaustive credit register, we find that dynamic provisioning smooths credit supply cycles and, in bad times, supports firm performance. A policy-induced one-percentage point (pp) increase in capital buffers extends credit to firms by 9 pp, increasing firm employment (6 pp) and survival (1 pp). Moreover, there are important compositional effects in credit supply related to risk and regulatory arbitrage by non-regulated and regulated-but-less-affected banks.

JEL Codes: E51, E58, E60, G01, G21, G28.

Key words: macroprudential policy, financial crises, credit, bank capital, systemic risk.

I. INTRODUCTION

Banking crises are recurrent phenomena that generally come after periods of strong credit growth (Kindleberger (1978), Gourinchas and Obstfeld (2012), Schularick and Taylor (2012)). Their damaging real effects (Reinhart and Rogoff (2009)) have generated a broad agreement among academics and policymakers that financial regulation needs to get a macroprudential dimension that aims to lessen the negative externalities from the financial to the macro real sector, as in a credit crunch caused by the weakening in banks' balance-sheets (Bernanke (1983)).

Time-varying macroprudential policy tools can be used to address these cyclical vulnerabilities in systemic risk (Yellen (2011)). Under the new international regulatory framework for banks – Basel III – regulators agreed to vary minimum capital requirements over the cycle, by instituting countercyclical bank capital buffers (i.e., procyclical capital requirements), which aim to achieve two macroprudential objectives at once.¹ First, boosting equity or provisioning requirements in booms provides additional (countercyclical) buffers in downturns that can help mitigate credit crunches. Second, higher requirements on bank own funds can cool credit-led booms, either due to the higher cost of bank capital or because banks internalize more of the potential social costs of credit defaults (via lower moral hazard by having more “skin in the game”).² Countercyclical buffers could hence lessen the excessive procyclicality of credit, i.e., those credit cycles that find their root causes in banks' agency frictions.³ Smoothing credit supply cycles will cause positive firm-level real effects if bank-firm relationships are valuable and credit substitution for firms is difficult in bad times.

Despite the attention now given by academics and policymakers alike to the global development of macroprudential policies, *no* empirical study so far has estimated the impact of a time-varying macroprudential policy tool on the *supply of credit* and the

¹ The common terminology we follow is that procyclical capital requirements generate countercyclical capital buffers that deal with the procyclicality of credit by the banking system. See Borio (2003), Hanson et al. (2011), Kashyap et al. (2011) and Dewatripont and Tirole (2012).

² Diamond and Rajan (2001), Morrison and White (2005), Shleifer and Vishny (2010), Tirole (2011) and Malherbe (2012). Tax benefits of debt finance and asymmetric information about banks' conditions imply that equity finance may be more costly for banks than debt finance (Freixas and Rochet (2008), Aiyar et al. (2014)). Admati and Hellwig (2013) question whether capital costs for banks are high.

³ As in Guttentag and Herring (1984), Rajan (1994), Holmstrom and Tirole (1997), Berger and Udell (2004), Ruckes (2004), Dell'Araccia and Marquez (2006), Diamond and Rajan (2006), Allen and Gale (2007), Adrian and Shin (2011), Gersbach and Rochet (2012) and Harris et al. (2015). Credit cycles also stem from firms' agency frictions as in Bernanke and Gertler (1989), Kiyotaki and Moore (1997), Lorenzoni (2008), Jeanne and Korinek (2012), Farhi and Werning (2014) and Korinek and Simsek (2014), though these models can also be interpreted as dealing with banks with agency problems in their borrowing from final investors. Hence, macroprudential policy limits exposures of both lenders and borrowers (see also Freixas et al. (2015)).

associated spillovers on *real activity* in both *good* and *bad* times. This paper aims to fill this void by analyzing a series of pioneering policy experiments with dynamic provisioning in Spain:⁴ From its introduction in 2000:Q3, and change in 2005:Q1 during good times, to its later performance when a severe (mostly unforeseen) crisis shock struck thus allowing to test the countercyclical nature of the policy, and also the changes in bad times (two reductions in 2008:Q4 and in 2009:Q4, and an ad hoc increase in provisions in 2012:Q1 and Q2). These shocks coupled with unique bank-, firm-, and loan-level (and loan application) data allow for identification.

Dynamic provisions – called “dynamic” as they vary over the cycle and “statistical” or “generic” as a formula is mandating their calculation – are *forward-looking*: Before any credit loss is recognized on an individual loan, a buffer (i.e., the dynamic provision fund) is built up from retained profits in good times to cover the realized losses in bad times (i.e., when specific provisions surpass its formula-based average over a credit cycle). The dynamic provision fund has a regulatory ceiling and floor. The required provisioning in good times is over and above the specific loan loss provisions and there is a regulatory reduction of this provisioning in bad times, when bank profits are low and new shareholders’ funds are costly to obtain. Dynamic provision funds are now Tier-2 regulatory capital. Hence, dynamic provisions are pro-cyclical, thus constituting counter-cyclical capital buffers to be used in crisis times.

The policy experiment in good times we focus on is the introduction of dynamic provisioning in 2000:Q3, which by construction entailed an additional non-zero provision requirement for most banks, but – and this is crucial for our estimation purposes – with a widely different formula-based provision requirement across banks.⁵ Next, we analyze the countercyclical workings of the dynamic provision funds built up by the banks as of 2007:Q4 following the crisis shock in 2008:Q3, and we also follow a series of policy experiments in bad times, i.e., the sudden lowering of the floor of the dynamic provision funds from 33 to 10% in 2008:Q4 and to 0% in 2009:Q4 (that allowed for a greater release of buffers for many banks) and, given that the overall pre-

⁴ There is almost no real experience on how such policies work along a credit cycle. Most of the discussions are theoretical, simulations (Repullo et al. (2010)) or policy papers (see e.g. the IMF paper by Lim et al. (2011)). Also new policies like stress tests cannot be analyzed yet over a full cycle. Moreover, we designate the policy changes as “experiments”, though macro-policy shocks to the banking sector are never (intentionally) randomized. Therefore, both shocks *and comprehensive* data are necessary for identification.

⁵ Dynamic provisioning has been discussed extensively by policy makers, newspapers and academics alike. For some references, and also for the results on the modification that took place in 2005:Q1, see the EBC Discussion Paper version of our paper. The 2005 results are most similar to the 2000 estimates reported here.

crisis level of provisions was relatively low (1.25% of total credit) and basically depleted in 2011, the 2012 increase in provisioning that banks needed to make based on their exposure to construction and real-estate firms to clean up their balance sheets.

To identify the availability of credit and the associated real effects, we employ a comprehensive credit register that comprises bank-firm level data on *all* outstanding business loan contracts and balance sheets of all banks collected by the supervisor, in conjunction with firm-level data from the Spanish Mercantile Register. We calculate the total credit exposures by each bank to each firm in each quarter, from 1999:Q1 to 2013:Q3, a time period which allows us to study the impact of dynamic provisions along a full cycle, with an unexpected crisis in the middle.⁶ We analyze changes in committed credit volume, on both the intensive and extensive margins, and also credit drawn, maturity, collateral and cost. We also use the granting of loan applications made by firms to new banks to analyze substitution effects. Depending on their credit portfolio, banks were differentially affected by the various policy experiments. Therefore, we perform a difference-in-difference analysis where we compare before and after each shock differently affected banks' lending at the same time to the same firm (Khwaja and Mian (2008), Jiménez et al. (2012)). Though we analyze the same bank (-firm) before and after the shock, in robustness we further control for up to 32 bank variables and key bank-firm and loan characteristics. We also exploit differences across various subsamples, components of the risk formula, and regulation (i.e., foreign branches in Spain were not regulated with respect to dynamic provisioning). Finally, by matching credit with firm balance sheets and the register on firm deaths, we also assess the effects on firm-level total assets, employment and survival.

In good times we find that banks that have to provision more cut committed credit more to the same firm after the shock – and not before – than other banks. These findings also hold for the extensive margin of credit and for credit drawn, maturity, collateral, and credit drawn over committed (an indirect measure of the cost of credit). Hence, procyclical bank capital regulation in good times contracts credit supply.

⁶ From 1999 to 2008 Spain went through a strong credit expansion and from 2008 onwards suffered a severe recession. In 2007, all major central banks, international organizations and private forecasters forecasted strong economic growth in 2008, but the GDP in Spain grew by 3.6% in 2007 and by 0.9% in 2008. After 2008, GDP contracted with 3.7% in 2009 and the unemployment rate jumped to more than 25%. In 2010 Spain came out of its recession but went back in from 2011 to 2013. In this regard Spain is indeed very well suited to test whether macroprudential instruments have an impact on the lending cycle and on real activity. In 1999 Spain had the lowest ratio of loan loss provisions to total loans among all OECD countries, but as a consequence of the introduction of dynamic provisioning, prior to the crisis in 2008 it had among the highest.

These findings are robust. For example, first, we apply the new provision formula to each bank's credit portfolio in 1998:Q4, well before any discussion on the policy had taken place, rather than in 2000:Q3 when dynamic provisioning became compulsory. Second, we exclude banks of direct interest to policy-makers, i.e., the savings or the very large banks, as policy-makers capable of accurately predicting the heterogeneous changes in bank credit could have devised the formula to maximize its impact. Third, to allay any remaining endogeneity concerns, we exploit the opposite implications of the formula related to bank risk and also assess how unregulated foreign branches react as compared to what regulated foreign subsidiaries or domestic banks do. Fourth, to understand the economic channel, we analyze how credit responds to realized overall provisions instrumented with the formula-based provisioning. Fifth, by using firm observables, firm fixed effects or no firm controls, we assess the degree to which the credit supply shock is orthogonal to observed and unobserved demand fundamentals.

But are firms really affected in good times? We find mostly not. Though total committed credit availability by firms drops immediately following the introduction of dynamic provisioning, three quarters after there is no discernible contraction of credit available to firms, as firms easily substitute credit from less affected banks (from both new banks and banks with an existing relationship). Consistently we find no impact on firm total assets, employment, or survival.

Yet, while average firms are not significantly affected, there are important changes in the allocation of credit supply. After the policy shock, banks with higher requirements focus their credit supply more to firms with a higher ex-ante interest paid and leverage, and with higher ex-post default, thus suggesting that higher capital requirements may increase bank risk-taking and searching-for-yield. This may be an unexpected but likely unintended consequence of this regulatory intervention (consistent with Koehn and Santomero (1980), Kim and Santomero (1988), Gale and Özgür (2005), Gale (2010)). Moreover, the negative impact of higher requirements on credit is stronger for smaller firms and banks, that struggle more to absorb the shock.

In bad times things look very different. Banks with higher pre-crisis dynamic provision funds stemming from policy increase their supply of committed credit to the same firm permanently over the whole period 2009-10 (i.e., capital buffers mitigate the credit crunch). Similar findings hold for credit continuation, drawn and drawn over committed (i.e., implying a lower cost of credit), and again for numerous alterations in

specification and instrumentation (as for example instrumenting pre-crisis buffers with initial policy provisioning from 2000). Results moreover suggest that the mechanism at work is through saving capital in crisis times when profits and shareholder funds are scarce and costly. In addition, banks with dynamic provision funds below ceiling (and hence that benefited most from the lowering of the floor in 2008:Q4 and in 2009:Q4 as they can immediately release capital funds) increase their credit supply only in the quarters around the policy changes. These banks also tighten maturity and collateral, possibly to compensate for the higher risk taken by easing volume.

Strikingly different in bad times (from good times) is that the changes in bank-firm level credit are binding at the firm-level; credit availability permanently contracts more for those firms that borrowed more from banks that when the crisis hit had lower dynamic provision funds stemming from policy. Results with granting of loan applications show that firms cannot substitute for lost bank financing. Consistent with this, we find that firm total employment and survival are negatively affected as well. The estimates also imply economical relevancy. Firms dealing with banks holding 1 percentage point (pp) more in dynamic provisioning funds (over loans) receive 9 pp more in committed credit than when dealing with other banks, have a 6 pp higher growth in the number of employees and a 1 pp higher likelihood of survival. In sum, banks with higher capital buffers, stemming from the stricter regulatory requirements in good times that can be drawn down in bad times, partly mitigate the deleterious impact of the financial crisis on the supply of credit and the associated real effects.

Compositional changes in credit supply are again important. Bank risk-taking also differs between higher pre-crisis capital buffers versus softer requirements on lowly capitalized banks. In the latter case more credit is supplied to more levered and longer-relationship firms, consistent with risk-shifting strategies related to zombie lending or gambling for resurrection. Hence, real and risk-taking effects are not the same when the regulator increases requirements in good times to have higher buffers in bad times, than when she simply reduces them in bad times. Also the positive effects on credit from countercyclical buffers are lower when bank non-performing loans and leverage ratios are higher, thus suggesting a binding market constraint for weaker banks.

Finally, we analyze the increase in provisions in 2012 that banks had to make based on their lending exposure in 2011 to construction and real-estate firms. The impact on credit supplied to firms *not* in construction or real-estate is immediate and binding

(again the granting of loan applications show that credit substitution is difficult). These firms are subsequently negatively affected in their survival. Firms that dealt with banks that on average face 1 pp more tightening in requirements suffer a contraction of at least 4 pp in committed credit availability and a 1 pp of survival. Significant effects are only after the policy change and not before. Moreover, the credit crunch is softer by lowly capitalized banks with high NPLs ratios and for firms with worse credit history and profits, consistent with risk-shifting by the banks more affected by the policy.

To conclude. Responding to the urgent interest among policymakers and academics, ours is the first empirical paper to actually estimate the impact of a macroprudential policy on credit supply cycles and their associated real effects. The robust evidence shows that countercyclical bank capital buffers mitigate cycles in credit supply and have a positive effect on firm-level aggregate financing and performance. In bad times switching between banks is difficult, thus firms will be more affected by capital shocks. Hence, the aggregate level of capital and its distribution across banks matters. Tightening capital requirements in bad times is much more contractive for credit and real output than it is in good times. Building up capital buffers before the crisis is superior in terms of maintaining real activity and avoiding risk-shifting than changing requirements (for lowly capitalized banks) during the crisis, as the evidence from the floor reductions in 2008-09 and the increase in 2012 suggest. However, a capital tightening in good times can induce both *risk-taking* by regulated banks (that supply more credit to firms with higher both ex-ante yield and leverage and ex-post defaults) and *regulatory arbitrage* by non-regulated and regulated-but-less-affected banks.⁷

II. DYNAMIC PROVISIONING, DATA AND IDENTIFICATION STRATEGY

1. *Dynamic Provisioning as a Countercyclical Tool*

Dynamic provisioning requirements in Spain are formula-based (Saurina (2009)). Total loan loss provisions for each quarter are the sum of: (1) Specific provisions based on the amount of non-performing loans at each point in time; plus (2) a general

⁷ Differences with the bank capital literature are many: (1) We study policy changes that exogenously vary the regulatory capital requirements in good and bad times and the workings of countercyclical capital buffers when a crisis hits. In contrast, Peek and Rosengren (2000) exploit the negative shocks to the profitability of multinational banks. Chodorow-Reich (2014) focuses on credit during the crisis and employment outcomes for a reduced subset of firms. (2) We identify the supply of credit with loan-level data. Bernanke and Lown (1991) and Berger and Udell (1994) rely on macro or bank-level data. (3) We assess the impact on bank-firm level credit availability, maturity, collateralization, and cost, and on firm-level financing and real performance. And, (4) we analyze compositional changes in credit supply (notably on risk-taking), and real effects for virtually all firms in the economy. Both risk-taking and the externalities to the real sector may be more important for financial stability than the topics dealt with in the bank capital literature so far.

provision which is proportional to the amount of the increase in the loan portfolio and; finally plus (3) a general countercyclical provision element based on the comparison of the average of specific provisions along the last lending cycle (for the whole banking sector) with the current specific provision (for each individual bank). The per-period (the flow of) *General Provisions* are computed as:

$$General\ Provisions_t = \alpha \Delta Loans_t + \left(\beta - \frac{Specific\ Provisions_t}{Loans_t} \right) Loans_t \quad (1)$$

where $Loans_t$ is the stock of loans at the end of period t and $\Delta Loans_t$ its variation from the end of period $t-1$ to the end of period t (positive in a lending expansion, negative in a credit decline). α and β are parameters set by the *Banco de España*, the Spanish banking regulator. α is an estimate of the percent latent loss in the loan portfolio, while β is the average along the cycle of specific provisions in relative terms. In good times, specific provisions are low – thus below the cycle average β – and hence flows are positive, thus increasing the buffer. By the same reasoning, in bad times, flows will be negative, thus allowing the countercyclical buffer to be used. Therefore, the second term of the formula is the key counter-cyclical component.

The above formula is a simplification. There are six homogeneous risk buckets to take into account the different nature of the distinct segments of the credit market, each of them with a different α and β parameter that is increasing in risk levels, calibrated based on the previous credit cycle. Consumer credit is put in the highest risk bucket, business loans and mortgages are in intermediate ones, and public debt is in the lowest risk bucket. Moreover, there is a ceiling for the fund of general loan loss provisions fixed at 125% of the product of parameter α and the total volume of credit exposures (i.e., 125% of the latent loss of the loan portfolio). The objective is to avoid an excess of provisioning, which might occur in a very long expansionary phase as specific provisions remain below the β component.

There was also a minimum floor value for the fund of general provisions at 33% of the latent loss. This minimum was lowered in 2008:Q4 to 10% and in 2009:Q4 to 0% in order to allow for more usage of the general provisions previously built in the expansionary period (we study both events later). Banks are also required to publish the amount of their dynamic provision each quarter. Moreover, in case of liquidation of a bank, general provisions correspond to shareholders. Therefore, as dynamic provisions (as said) are a special kind of general loan loss provision, the buffer they

accumulate in the expansion phase can be assimilated to a capital buffer. From 2005 onwards, dynamic provisions were also formally considered to be Tier-2 capital (regulatory capital, although not as core as equity).

Figure 1 shows over time the flow of total net loan provisions (Panel A), the stock of NPLs over total loans (Panel B), and the stocks of total, specific and general dynamic provisions over total loans (Panel C), highlighting the introduction in July 2000, the reduction in 2005, and the increase during the crisis (we analyze all shocks indicated by dashed vertical lines in Figure 1). So then why would dynamic provisioning and the resultant countercyclical capital buffers be beneficial for the economy? First note that in Panel C total provisions grow at a substantial lower speed than specific provisions in crisis times due to the fact that dynamic provisioning funds are reduced (flows are negative so the stock is reduced). This implies that exactly at the time when bank profits are very low or even negative and access to equity funds costly, banks can draw down the buffers that were built up in good times. These buffers should, therefore, reduce the costs (and increase the quantity) of financing for banks, which they could pass on to their borrowers. Indeed, Laeven and Majnoni (2003) find that in most countries banks' total provisioning occurred mostly in crisis times and conjecture that this will magnify the pro-cyclicality of bank lending. Dynamic provisioning by building the buffers in good times could help to reduce the credit crunch in bad times.

Note also that in 2010 the speed of total provisions and specific provisions are very similar (i.e., identical slopes) because at that time the dynamic provisioning funds are almost depleted. The crisis shock was very large as compared to the relatively small ex-ante buffer of dynamic provisions the banks had in place (approximately 1% of total assets and 84% of total provisions in 2007:Q4), so these provisions were almost depleted by the end of 2010 (only 11% of total provisions in 2010:Q4 remained). Finally, given that the dynamic provision funds were depleted, in 2012 the new government increased provisioning based on real estate exposure in a one-off movement to clean up banks' balance sheets.

2. Datasets

Spain offers an ideal experimental setting for identification; not only because of the policy experiments with dynamic provisioning, but also since its economic system is bank dominated and its exhaustive but confidential credit register called CIR (which is used by the *Banco de España* for supervision) records all bank lending activity over

the last full credit cycle matched with firm and bank balance sheet-data (Jiménez et al. (2014a)). We work with commercial and industrial (C&I) loans granted by commercial banks, savings banks and credit cooperatives (representing almost the entire Spanish banking system) to non-financial publicly limited and limited liability companies. We use all C&I loans (covering 80% of total loans) granted by more than 175 banks to 100,000 firms. The CIR is almost comprehensive, as the monthly reporting threshold for a loan is only 6,000 Euros, which alleviates any concerns about unobserved changes in bank credit to SMEs. We also use loan application level data to analyze credit substitution in the extensive margin (Jiménez et al. (2014b)).

We match each loan to bank balance-sheet variables (size, capital, liquidity, NPLs, profits, real estate exposure and other key variables as explained in the next sections) and to selected firm variables (firm identity, industry, location, size, age, capital, liquidity, profits, tangible assets, and whether or not the firm survives). We also analyze the loans that cannot be matched to firm variables. Both loan and bank data are owned by the *Banco de España* in its role of supervisor (the data is confidential but the results of the paper can be replicated, see the Online Appendix for details). The firms' dataset is available from the Spanish Mercantile Register at a yearly frequency (and represents around 70% of outstanding bank loans from the CIR, though we lose 30% more when analyzing firm employment). Firm survival data come from the Central Business Register (DIRCE). Firm balance sheet data are until 2011:Q4 whereas survival is until 2012:Q4 and loan and bank-level data are until 2013:Q3.

3. *Identification Strategy*

We study the impact of the policy experiments regarding dynamic provisioning on credit availability both at loan and firm level and the associated firm-level real effects. As the dynamic provisioning formula is based on different risk buckets that depend on the loan portfolio and banks differ in their lending, banks face different provisioning requirements from the policy changes. We explain each shock and specification we run in detail in Sections III and IV. For each shock we calculate the changes in each bank's provisioning requirement. As the policy shocks across banks cannot be considered "random", the data and empirical strategy are crucial. We perform a difference-in-difference analysis where we compare the lending of the same bank before and after each shock and simultaneously compare it to other banks differently affected by the

shock – the identification comes *both* from the timing (before and after the shock) and from the shocks that affected banks differentially.

Even though we analyze the same bank before and after the shock (which is similar to including bank fixed effects), we also need to control for bank fundamentals that could be differently affected. First, borrowers may differ and we analyze the change in credit availability to the same firm at the same time by banks with different treatment intensity to each shock by using firm or firm-time fixed effects in loan-level regressions (Khwaja and Mian (2008)). In this way, we capture both observed and unobserved time-varying heterogeneity in firm fundamentals (i.e., credit demand and as firms often engage similar banks also the characteristics of the bank’s portfolio composition). Second, we analyze whether the estimated coefficient is different from the one estimated in a regression without firm fixed effects (and even without any firm variables) to analyze whether the policy shock is orthogonal to borrowers’ demand and thus whether firm level regressions with only firm observables yield any implications for credit availability (Jiménez et al. (2014a)). Third, in robustness we control for up to 32 bank variables covering all relevant characteristics of banks, and include bank-firm and loan variables (as loans by different banks to the same firm could be different).

To address any remaining endogeneity concerns we further exclude either the savings banks or the very large banks as policy makers could have devised the formula to maximize the credit impact at either one of these groups of banks, instrument dynamic provisioning in each experiment with pertinent formula-determined prior values, and add bank fixed effects in cross-sectional specifications that assess the compositional changes in credit supply. And while domestic banks and foreign subsidiaries were subject to dynamic provision requirements, foreign branches were not (foreign branches have to report all loans to the CIR, but are not regulated in their capital and accounting in Spain). We therefore assess these two groups of treated versus non-treated banks in their lending to the same firm at the same time. We also analyze foreign subsidiaries versus branches. Moreover, we exploit the opposite implications of the formula related to higher bank risk to check whether it is the policy (formula) or risk driving the results. Finally, we analyze the changes in credit on the changes in realized overall bank provisions, which is instrumented in a first stage with the deterministic formula-based provisioning.

III. IN GOOD TIMES: INTRODUCTION OF DYNAMIC PROVISIONING

1. *The Specifics of the Introduction of Dynamic Provisioning in 2000:Q3*

Dynamic provisioning was introduced in Spain in 2000:M7 and enforced at the end of 2000:M9 (our first policy experiment), as Spain had very low levels of provisioning compared to the rest of the OECD countries. We apply the provisioning formula that is introduced to the existing loan portfolio in 1998:Q4 (except for the consumer credit component as we do not have the individual loans), without taking into account the specific provision component to avoid endogeneity, yielding a bank-specific amount of new funds that is expected to be provisioned. We then scale this amount by the bank's total assets. We label this scaled amount in provisions for bank b , *Dynamic Provision(for 1998:Q4)_b*, abbreviated in interaction terms by DP_b (Table A.1 collects all variable definitions). We go back two years to avoid self-selection problems, i.e., banks changing their credit portfolio weights before the law enters into force.

The summary statistics in Table 1 show that there is ample variation in the dynamic provisions (over total assets) that banks have to make. The mean of the banks' *Dynamic Provision* is 0.26%, its median 0.22, and the standard deviation 0.10, ranging from a maximum of 0.86 to a minimum value of 0%. Not reported is how *Dynamic Provision* varies across banks' characteristics. Banks with a lower liquidity ratio were facing higher dynamic provisioning, and so were commercial banks (more than savings banks and cooperatives). In addition, banks that had to provision more did not decrease Tier-1 capital. Moreover, regressing *Dynamic Provision* on firm observables implies the following: When no controls are included, less capitalized and smaller firms are more likely to work with less affected banks; when only firm province and industry fixed effects are added as controls, all the firm variables are insignificant.

2. *Loan-Level Results*

The first model at the loan level we estimate is:

$$\begin{aligned} \Delta \log \text{Commitment}(2000:Q1 - 2001:Q2)_{bf} \\ = \delta_f + \beta \text{Dynamic Provision}(for 1998:Q4)_b + \text{controls}_{bf} + \varepsilon_{bf} \end{aligned} \quad (2)$$

where $\Delta \log \text{Commitment}_{bf}$ is the change in the logarithm of (strictly positive) committed credit by bank b to firm f over the impact period from 2000:Q1 to 2001:Q2, δ_f are firm fixed effects, and controls_{bf} can include other bank and bank-firm relationship characteristics which comprise $\text{Ln}(\text{Total Assets})$, *Capital Ratio*, *Liquidity Ratio*, *ROA*, *Doubtful Ratio*, in addition to *Commercial Bank* and *Savings Bank*

dummies, and $\ln(1 + \text{Number of months with the bank})$.⁸ ε_{bf} is the error term and β the main coefficient of interest. This model will be estimated for a sample of 416,611 observations from bank-firm pairs of firms with multiple bank-firm relationships. Standard errors are clustered at the bank *and* firm level (clustering at the bank level yields virtually identical results). We also estimate this model for different lending margins and assess *quarter by quarter* outcomes (to test for pre-trends and short- and medium-term policy effects). And in robustness we vary controls and subsamples.

The estimated coefficient on *Dynamic Provision* in Model 1 in Table 2, which equals -0.357***, is both statistically significant and economically relevant. A one standard deviation increase in *Dynamic Provision* (i.e., 0.10%) *relatively* cuts committed lending by 4 pp. That is a sizable effect, as committed lending on the intensive margin contracted by 2% on average from 2000:Q1 to 2001:Q2. Next we add firm * bank type (i.e., commercial, savings and other bank) fixed effects in Model 2 (limiting the used sample to firms that borrow from multiple banks of the same type) and then loan characteristics in Model 3. The coefficients on *Dynamic Provision* equal -0.397*** and -0.335***, respectively. Results remain virtually unaffected if we add to the parsimonious set of controls the following five additional bank characteristics that proxy for bank risk-taking: *Loans to Deposits Ratio*, *Construction*, *Real Estate and Mortgages over Total Assets*, *Net Interbank Position over Total Assets*, *Securitized Assets over Total Assets* and the *Regulatory Capital Ratio*. The estimated coefficient (untabulated) then equals -0.305***. Adding squared and cubed terms of all bank characteristics (in total 32 terms) leaves the estimate of the coefficient on *Dynamic Provision* again mostly unaffected, i.e., -0.328**. Moreover, when none of the firm characteristics (i.e., firm fixed effects, province and industry fixed effects, firm variables) are included in the specification, the estimated coefficient equals then -0.290** which is statistically not different from the estimate obtained with firm fixed effects in Model (1), i.e., -0.357**. Therefore, results suggest that the policy shock is orthogonal to firm fundamentals (demand). All these robustness checks will also be done for the benchmark models that we present later, but given their very limited impact (also then), these will not be mentioned further.

⁸ The change in credit is from one quarter before the policy was announced over a period of one year afterwards and is winsorized (and also the below-introduced *Alog Drawn*) at the 1st and 99th percentile.

In Models 4 and 5 we restrict the sample to loans that can be matched to key firm variables to make an adequate comparison with the firm-level specifications (where we only use firm observables). For the same reason we replace the saturating set of firm * bank type fixed effects by firm variables and province and industry fixed effects in Model 5. Despite these changes, the coefficients on *Dynamic Provision* remain very similar, which further suggest that the policy shock is orthogonal to demand.

Figure 2 displays with a black line the estimated coefficient on *Dynamic Provision* for Model 4 when altering the time period over which $\Delta \log \text{Commitment}$ is calculated, i.e., from 2000:Q1 to the quarter displayed on the horizontal axis (starting in 1999:Q1 and finishing in 2003:Q4). The dashed black lines indicate a 10% confidence interval. This Figure (and similar later figures) comprises more than what is in Table 2, showing the main result over time for each single quarter before and after the 2000 shock. The estimated coefficient is statistically significant in 2000:Q2 when dynamic provisioning was announced and turns also economically more relevant in 2000:Q3, when it started to be enforced (this lack of any significant pre-shock trend in the estimated coefficients is consistent with unreported simple plots indicating that banks made additional provisions only after the policy introduction; see also Figure 1). In sum, banks with higher dynamic provisions cut their total credit commitment more to the same firm at the same time after the policy shock (as compared to before the shock) than banks with lower dynamic provisioning requirements.

To further allay endogeneity concerns, we also analyze the difference between those banks that are and those that are not subject to dynamic provision requirements in Spain. The regulated banks are the domestic banks and the foreign bank subsidiaries, while the foreign bank branches were not regulated in this regard and hence not affected. We perform such an analysis in a difference in difference setting with either a dummy variable (regulated or not; upper panel in Figure 3) or a continuous variable (equal to zero if not regulated and, if the bank was regulated, by how it had to increase provisioning based on the formula; not reported). We again include firm fixed effects for each quarter. The estimates confirm that affected banks contract lending. We also study the group of few foreign banks by itself, leaving us with a substantially reduced sample, and also find stronger effects for banks that are regulated (and that increase dynamic provisions) than those that are not (see the lower panel in Figure 3). Also, to

further allay endogeneity concerns,⁹ when we exclude for robustness the savings or the very large banks, the estimated coefficients are very similar.

In Model 6 we replace *Dynamic Provision(1998:Q4)* with the *Dynamic Provision Funds* in 2001:Q3, which is the level of dynamic provisioning actually chosen by the bank during the impact period, instrumented with the until-now-employed and formula-determined *Dynamic Provision(1998:Q4)*. The estimated coefficient in the first stage equals 0.711*** (the instrument does not suffer from a weak-instrument problem), while the estimated coefficient from the second stage equals -0.558***, which implies an impact of *Dynamic Provision(1998:Q4)* on lending of -0.397 (=0.711 x -0.558) which is very similar to the one-stage coefficient estimates.

Finally, we turn to a two stage model that allows the effect of changes in dynamic provisioning in lending to go through the changes in the specific and general funds. For organizational clarity we display the estimates in Model 1 of a new Table 3 (which will be augmented with very similar exercises from the other shocks). The changes in *Dynamic Provision(1998:Q4)* have an almost one-for-one effect in terms of the changes in the specific and general funds. The estimated coefficient equals 0.930*** (again the instrument does not suffer from a weak-instrument problem). The changes in those funds then result in committed lending with an estimated coefficient of -0.427***, for an overall impact of dynamic provisioning of -0.397 (= 0.930 x -0.427). Hence, dynamic provisioning by increasing overall provisions reduces credit supply.

Models 7 to 11 in Table 2 show that after the introduction of dynamic provisioning banks also tighten credit drawn (though it is potentially firm demand driven), maturity, collateralization, continuation, and credit drawn over committed (which reflects cost of

⁹ The dynamic provisioning formula treats opposite risk stemming from buckets and from current specific provisions, where the first one increases the dynamic provisions and the second one does not. To investigate this issue, we split both dynamic provisioning credit categories and specific provision into two risk classes for each bank, high and low. Consequently we have four different coefficients on dynamic provisioning: β_{HH} , β_{HL} , β_{LH} , and β_{LL} (the first capital letter indicating the category of dynamic provisioning, the second the level of the specific provision). We expect $\beta_{HL} \leq \beta_{HH} \leq \beta_{LH}$ and $\beta_{HL} \leq \beta_{LL} \leq \beta_{LH}$ (recall that β is expected to be negative, so that the absolute value of β_{HL} should be the highest). Excluding β_{LH} from the estimation, we obtain the estimated coefficients of β_{HL} (equal to -0.23***), β_{HH} (equal to -0.061*) and β_{LL} (equal to -0.034); results are further not tabulated. These results imply that it is the “formula” – i.e., the tightening of dynamic provisioning requirements – and not bank risk per se – that affects credit supply after the introduction of the policy. We obtain the same result if in our benchmark model we introduce the specific provision for the bank and its interaction with dynamic provisioning *DP*. We then find that the coefficients on dynamic provisioning itself is -0.468*** and 41.538* for its interaction with specific provision, implying that a more severe tightening of requirements results in a lowering of the credit supply, but that the effects are mitigated if the bank already has in place higher ex ante specific provisions.

credit given that firms with at least two credit lines will in general draw more after the shock from banks with cheaper credit). Hence, banks tighten all credit supply terms.¹⁰

Next we investigate heterogeneous effects across bank and firms. Table 4 tabulates the benchmark specifications that also include interactions of dynamic provision with lagged: (a) *Bank* total assets, capital ratio, ROA, and non-performing loan ratio; (b) *firm* total assets, capital ratio, ROA, bad credit history, interest paid and ex-post default; and (c) the length of the *bank-firm* relationship. Results indicate that dynamic provisioning cuts committed credit more at smaller banks and for smaller firms. Interestingly, ex-ante more levered firms and those that yield a higher interest rate paid to the banks are less affected by credit supply restrictions from more affected banks, maybe because these banks take on higher risk to compensate for their increase in the cost of capital and the lowering of bank profits (in line with some theoretical predictions), or due to their higher policy capital buffers. Moreover, the reduction in credit supply by banks with higher dynamic provisioning is lower to firms that default more ex-post. This result is only significant if we do not control for the interaction of provisioning and ex-ante firm yield, but the coefficients on the interaction with yield and leverage remain similar in size and significant. This suggests not only that banks with higher dynamic provisioning steer more credit to firms with higher yield, leverage and default, but also that *ex-ante* yield and leverage captures well *ex-post* default.

All in all, these findings are consistent with a search for yield by the banks triggered by the introduction of dynamic provisioning. An important caveat is that banks are not price takers in their lending as compared to investing in bonds from large corporations or countries, as e.g. banks could have some monopolistic power in lending; though all the results are very similar, or even stronger, if we restrict the loans for each firm to the banks which are not its main lender. Finally, in Model 2 in Table 4 we add bank fixed effects, and results are virtually unaffected, suggesting that unobserved bank heterogeneity is unlikely to account for the variation in credit supply observed.

3. *Firm-Level Results*

Loan-level results imply a cut of credit supply; however, effects could be mitigated if firms can obtain credit from the less affected banks. Hence, to assess this macro effect of dynamic provisioning we turn to firm-level estimations. The first model is:

¹⁰ *Dynamic Provision* is statistically significant on *Loan Dropped?* for an impact period extending past 2002:Q3 (not reported), because if loans with a long maturity are not repaid, the dependent variable is zero.

$$\begin{aligned} \Delta \log \text{Commitment}(2000:Q1 - 2001:Q2)_f \\ = \delta_p + \delta_i + \beta \text{Dynamic Provision}(for\ 1998:Q4)_f + \text{controls}_f + \varepsilon_f \end{aligned} \quad (3)$$

where $\Delta \log \text{Commitment}(2000:Q1 - 2001:Q2)_f$ is the change in the logarithm of (strictly positive) committed credit by *all* banks to firm f , δ_p and δ_i are the province and industry fixed effects, $\text{Dynamic Provision}(for\ 1998:Q4)_f$ is the same dynamic provisioning variable as before for all banks that were lending to the firm f prior to the introduction (weighting each bank value by its loan volume to firm f prior to the shock over total bank loans taken by this firm), and controls_f include other bank, bank-firm relationship and firm characteristics for all banks of firm f . ε_f is the error term. Because the analysis is at the firm level, firm fixed effects cannot be included; however, we know from the loan level regressions that the estimated coefficients are identical with and without controlling for firm fixed effects. Hence, controlling for firm variables is enough to control for all firm fundamentals.

The obtained credit after the shock can be from both “current” and “non-current” banks (that did not lend to the firm prior to the shock). Hence we analyze whether firms are able to absorb the impact of the shock (that was affecting the banks they were borrowing from prior to the shock) by obtaining more credit from both current and/or non-current banks. The sample and basis periods are the same as for the loan-level analysis. The standard errors are clustered at the main bank level (and triple clustered at the first, second and third main bank level in robustness).

In Models 12 to 16 in Table 2 we consecutively regress our main dependent credit variable at the firm level, i.e., $\Delta \log \text{Commitment}(2000:Q1-2001:Q2)$, in addition to $\Delta \log \text{Drawn}(2000:Q1-2001:Q2)$, and firm $\Delta \log \text{Total Assets}(1999:Q4-2001:Q4)$, $\Delta \log \text{Employees}(1999:Q4-2001:Q4)$, and $\text{Firm Death?}(2001)$ on $\text{Dynamic Provision}(1998:Q4)_f$. For the main credit variable, Models 12 and 13, the estimated coefficients on Dynamic Provision are insignificant. The gray lines in Figure 2 show that the coefficients on Dynamic Provision are never significant (though economically significant only in the first quarters but with p-values of 20%), thus suggesting that in good times firms can swiftly turn to different banks outside the set of current banks that were employed prior to the introduction or even sufficiently shift borrowing within this set of current banks to less affected ones. Granting of loan applications to new banks is relatively high in good times (Figure 4). Consistent with this view, we find no real effects on firm total assets, employment, or survival in Models 14 to 16.

In sum, results show that dynamic provisioning in good times can reduce the supply of credit by the affected banks but that the impact on firm financing and performance seems low. Hence dynamic provisioning introduced at the right time can be a potent countercyclical tool that modifies banks' lending behavior, but that is also fairly benign in its impact on firms. On other hand, there are some unanticipated effects of the policy: Tighter capital requirements can induce risk-taking by regulated banks and regulatory arbitrage by non-regulated banks (foreign branches), the latter undoing part of the policy as regulatory arbitrage usually does. However, the higher supply of credit by non-regulated banks and by regulated-but-less-affected banks substantially mitigate the negative credit and real effects at the firm level (the 4 pp difference in loan level credit, absence an effect on firm level credit, means that the difference does not arise entirely because banks with higher provisioning cut lending by the full 4 pp).

IV. IN BAD TIMES: DYNAMIC PROVISION FUNDS AND CRISIS, FLOOR LOWERING, AND NEW REQUIREMENTS

1. *The Specifics of the Crisis Shock and the Floor Lowering*

We now turn to the analysis in bad times when the countercyclical nature of dynamic provisioning was operational by the unexpected crisis shock (as the dynamic provision flow turns negative as the stock starts to decline) and two policy shocks decreased the provisioning floor. For the crisis shock we calculate how much each bank had built up as dynamic provision funds (over assets) just prior to the onset of the crisis in Spain. The variable *Dynamic Provision Funds(2007:Q4)* varies across banks, with a mean of 1.17 and a standard deviation that equals 0.23 (see Table 5 for summary statistics). The lowering in 2008:Q4 of the floor of provision funds from 33 to 10% and in 2009:Q4 to 0% affected mostly the banks that had not reached the maximum in their dynamic provision funds before and could immediately release the built-up funds. It is captured by the dummy variable $d(\text{Dynamic Provision Funds} < 1.25)$, which equals one if the dynamic provision funds is below the ceiling of 125% of latent loan losses just before the policy shock, and equals zero otherwise, with a mean value of 0.61. For the quarter-on-quarter time-varying results, this variable is calculated in each quarter.

2. *Loan-Level Results*

The variable *Dynamic Provision Funds* and $d(\text{Dynamic Provision Funds} < 1.25)$ replace *Dynamic Provision* in Equation 2, but otherwise the estimated models in Table 6 run in parallel with those in Table 2. For example in Models 1 to 5 we regress $\Delta \log$

Commitment from 2008:Q1 to 2010:Q4 on the two dynamic provisioning variables and the indicated sets of controls. Both coefficients are positive, statistically and economically significant. Take again Model 4 saturated with firm * bank type fixed effects. The estimated coefficient on *Dynamic Provision Funds* equals 0.348***, which implies that one standard deviation more in terms of funds (i.e., 0.23) delivers 8 pp more credit growth between 2008:Q1 and 2010:Q4, and that at a bank with a mean level of funds (i.e., 1.17%) lending grew by almost 41 pp more than at a bank with zero funds. The estimated coefficient on $d(\text{Dynamic Provision Funds} < 1.25)$ equals 0.125***, implying that lending at banks below their ceiling grew by 13 pp more.

Figure 5 again crucially displays the estimated coefficients (and confidence intervals) for Model 4 for each quarter from 2008:Q1 to 2010:Q4. The graphs show that the estimates for *Dynamic Provision Funds* are permanently positive during the crisis, statistically significant over all horizons after the start of the crisis, and higher values in 2010 than in the beginning of the crisis. Figure 6 shows the impact of two floor reductions on credit commitment. The highest positive effects are for the two quarters when the policy shocks take place (and for the first shock, effects are also statistically significant in the preceding quarter when the reduction was announced and in the quarter after).¹¹ Note that in the beginning of the crisis, the second main variable has relatively stronger effect than the first one, also as compared to the 2010 period.

Returning to Table 6, results are similar when we perform the robustness tests as in Table 2 or putting one variable alone (not reported) and when instrumenting (in Model 6) the actual *Dynamic Provision Funds* in 2007:Q4 with the simulated funds fixing the bank loan portfolio in 2000:Q3! By instrumenting with the part explained by the regulation (the formula) applied to the portfolio seven years earlier (i.e., the moment of introduction of dynamic provisions) we remove the potentially endogenous part (banks could have dynamically provisioned more than required by regulation) in 2007:Q4. The estimated coefficient in the first stage equals 0.634***, and the instrument does not suffer from a weak-instrument problem. The pass-through effect of *Dynamic Provision Funds* in 2007:Q4 now equals 0.466 (= 0.634 x 0.735). We also again turn to the two stage model that allows the effect of changes in dynamic provisioning in

¹¹ Only banks with *DPF* below 125% were allowed to immediately release funds. In a regression discontinuity setup we find the floor reductions in 2008:Q3/4 and 2009:Q4 to spur banks below 125% to increase the supply of credit more than banks above in the theoretical value of the formula. Results are also similar if we use alternative measures, e.g., dummies for the lower 25 or 50% in *DPF*. Almost all banks maintain positive buffers possibly to avoid a binding regulatory limit (e.g., Flannery and Rangan (2008)).

lending to go through the changes in the specific and general funds. The estimates are in Model 2 in the previously introduced Table 3. Controlling for bank risk measures, the changes in *Dynamic Provision Funds/Assets(2007:Q4)* have now an estimated coefficient equal to -0.866^{***} . The changes in those funds then result in committed lending with an estimated coefficient that equals -0.335^{**} , for an overall impact of dynamic provision funds that equals 0.290 ($= -0.866 \times -0.335$). Therefore, countercyclical capital buffers work positively on credit supply via saving on capital in crisis times (when bank profits and shareholder funds' access are scarce).

Results are very similar for drawn credit (Model 7), drawn to committed (Model 11) and for the extensive margin of loan continuation (Model 8). But interestingly, these same banks also shorten loan maturity (Model 9) and increase collateral requirements (Model 10) in both a statistically significant and economically relevant manner; possibly to compensate for the higher risk they take by lending more during the crisis.

In Table 7 we turn to the effects across bank and firm characteristics. The impact of the provisioning on credit supply was absorbed best by well-capitalized banks with a low NPL ratio. Hence, highly leveraged banks with high NPLs ratios may face a capital requirement in the market that is higher and hence more binding than the regulatory requirement. A loosening of the regulatory requirement may therefore have a more muted effect on credit supply for those riskier banks. The floor lowering also led banks below the ceiling to grant more credit supply to firms with less equity or longer time with the bank, consistent with risk-shifting (gambling for resurrection and zombie lending). Hence, both credit (including risk-shifting) and real effects are not the same when the regulator increases requirements in good times to have higher buffers in bad times than when the regulator just lowers requirements in bad times.

3. Firm-Level Results

The firm-level estimates in Models 12 to 16 in Table 6 (and Figure 5) suggest firms cannot substitute for the impact of dynamic provisioning we document at the loan level. In Model 12 for example the estimated coefficient on *Dynamic Provision Funds* equals 0.092^{**} , implying that firms dealing with banks holding 1 pp more in pre-crisis funds receive 9 pp more in committed credit than when dealing with other banks, partly offsetting the contraction in committed borrowing by 34% for the mean firm. Figure 5 (the gray lines in the upper panel) show this effect is permanent, statistically significant and large, though the effect stabilizes over 2010 (probably because funds

start depleting, see Section 4). All in all, given that we control for bank and firm characteristics and, in the loan-level regressions, the coefficients in the models with firm fixed effects and the models with firm variables are not statistically different, the firm-level results can be interpreted as being driven by credit supply.

There are important real effects associated. Employment growth at firms borrowing from banks with higher pre-crisis buffers relatively increases during the crisis period. The estimated coefficient of 0.056* (Model 15) implies a 6 pp higher growth for each 1 pp more in funds (mean growth was -14%). Firm survival is similarly affected. The estimate of -0.013** in Model 16 implies that a 1 pp higher pre-crisis buffer results in a 1 pp higher likelihood of survival. As Figure 4 shows for the granting of loan applications, substitution of banks is more difficult in bad times than in good times. The estimated coefficients on the floor variables (Figure 6), though statistically significant around the quarters related to the floor reductions, turn statistically insignificant over the entire impact period. Consistent with these results, we find no real effects associated to the floor reductions over the whole 2008-10 period.

4. Increase in General Provisions in 2012

The last shock we analyze is a change in the law in 2012:Q1 and Q2 that increased the provisions that banks needed to make on all their (performing and non-performing) lending exposure to construction and real-estate firms as of 2011:Q4.¹² The increase in provisions could be accomplished until the end of 2012 and Figure 1 shows this large increase of around 85 billion in provisioning, which is around 8.5% of annual GDP (and compared to 20 billion one year before). We investigate the impact of the pre-shock bank-level exposure to construction and real-estate firms on its lending to *non*-construction or real-estate related firms. *Construction & Real-Estate/Total Loans to Firms(2011:Q4)* replaces *Dynamic Provision* in Equation 2, but otherwise Table 9 lines up with Table 2 (see Table 8 for the summary statistics).

In Models 1 to 5 we regress $\Delta \log \text{Commitment}$ from 2011:Q4 to 2012:Q4 on the construction and real-estate exposure variable and the indicated sets of characteristics and fixed effects. The estimated coefficients are in all cases negative, statistically

¹² In February 2012 banks had to provision 7% for all performing loans related to construction and the real estate sector in their portfolio. In May 2012 these provisions were increased by law depending on the nature of the assets: An additional 45% for land, 7% for real estate developments completed, and 22% for real estate developments in progress. Hence these provisions constituted a one-time and ad hoc increase. The law also tightened provisioning for non-performing construction and real estate loans. All these provisions were charged by the banks as specific provisions by 2012:Q4.

significant, and economically relevant. In Model 4 for example the estimated coefficient on this variable equals -0.352^{***} , which implies that one standard deviation more exposure (i.e., 0.08) results in 3 pp less growth in lending to non-construction or real-estate firms between 2011:Q4 and 2012:Q4, a sizable effect given that committed lending to these firms contracted on average by 15%. Crucially, this effect is again permanent (over 2012 and 2013) as Figure 7 demonstrates, and it can be traced through the increase in the overall provisioning as Model 3 in Table 3 shows. Moreover, the increase in provisioning imposed on banks leads to a statistically significant contraction in credit drawn, shortening in maturity and tightening of collateralization requirements (Model 6, 8, 9, Table 9). Also, given that real estate assets are affected in the crisis, it is important to note that all the results are only significant after (and not before) the policy change, as Figure 7 shows.

Importantly, at the firm level committed credit falls (Models 11 and 12, and Figure 7), while firm death increases (no balance sheet data are yet available). For firms dealing with banks that are average in terms of their lending to construction and real-estate firms (i.e., equal to 0.36) the tightening in requirements means a contraction in committed credit at the firm level by at least 4 pp and a 1 pp lower likelihood of survival. These estimates vividly demonstrate the costs associated with a required increase in capital in crisis times. Again analyzing the granting of loan applications shows the difficulty of substituting banks in crisis times (Figure 4).

Finally, compositional changes in credit supply are again interesting (Table 10). Banks with higher requirements expand relatively more supply of credit to firms with lower profits, with a bad credit history and (marginally significant) with longer relationship, though these banks also expand to firms with lower yield (though it could be consistent with risk-shifting as zombie lending can imply a lower interest rate, so that the firm reduces the risk of default). Moreover, contractive effects are overall weaker for lowly capitalized banks with high ratio of NPLs. These results are consistent with risk-shifting (including zombie lending).

V. CONCLUSIONS

We study the effects of dynamic provisioning (pro-cyclical capital requirements generating countercyclical bank capital buffers) on the supply of credit to firms and their real performance in good and bad times. Spain in the period between 1999 and 2013 offers an excellent setting to empirically identify these effects, given the many

policy experiments with dynamic provisioning (generating time-variant bank-specific shocks), the full credit cycle with an unexpected crisis shock to test the countercyclical nature of the policy, and the unique micro data that is available.

Our results overall show that dynamic provisioning mitigates credit supply cycles, with strong positive aggregate firm-level credit, employment and survival effects in crisis times, when switching from banks with low to high capital buffers is difficult. Our results suggest that the mechanism at work is through saving capital in crisis times when profits and shareholder funds are scarce and costly. While the effect on credit supplied by a specific bank to a specific firm is always economically strong, in good times dynamic provisioning is substantially weaker in halting a credit boom at the firm level as firms switch to less affected banks, including banks outside the regulatory perimeter – regulatory arbitrage. Moreover, the results suggest that the introduction of dynamic provisioning also leads banks to increase risk and search for yield, an unintended consequence of the policy indeed. Yet despite these system weaknesses, the bank buffers build up in good times clearly helped to mitigate the credit crunch in bad times, when switching banks turns problematic. With respect to upholding real activity and avoiding risk-shifting, results suggest it is better to increase capital buffers in good times than changing requirements for lowly capitalized banks in crisis times. Though the low dynamic provision funds (equaled only around 1.25% of total loans) are good for empirical identification, ultimately they were overwhelmed by the crisis. In fact, the one-off increase in provisions in 2012 contributed strongly to a credit crunch with substantial negative real effects.

Consequently, our findings hold important implications for macroprudential policy. Results indicate that bank procyclicality can be mitigated with countercyclical capital buffers, with less need for costly governmental bail-outs and expansive monetary policy in crisis times. Basel III requires countercyclical bank capital buffers and our findings support the reasoning that prevailed on these issues in Basel, the G20 and in some central banks – “Policymakers need to establish that countercyclical policy tools address cyclical vulnerabilities more effectively than simpler tools that are constant over the course of the cycle do” (Yellen (2011), p.10).

Our results are also important for macroeconomic modeling as we show that in bad times (as compared also to good times) there are substantial real effects stemming from credit supply changes due to bank capital positions. Not only does aggregate

bank capital matter, but as (we show) firms struggle to switch banks in bad times (due to adverse selection for example, Dell’Ariccia and Marquez (2006)), the distribution of bank capital *per se* drives macroeconomic real effects as well. Hence, bank (capital) heterogeneity matters for macroeconomics. Moreover, heterogeneity also matters across time, banks, firms and loans. For example, banks differentially affected by policy change their composition of supply of credit, as in macroeconomic models with more than one lending opportunity (Matsuyama (2007)).

Finally, our results inform the recent and contentious debate among academics, bankers and policy makers on higher bank capital requirements and its impact on the supply of credit and the associated real effects for the overall economy (Hanson et al. (2011), Admati and Hellwig (2013)). Witness in particular how overall effects were benign in good times, how the last policy experiment of tightening provisioning in the midst of the crisis was followed by a severe credit crunch with a matching real contraction, and how having plentiful pre-crisis capital buffers sustained credit and real activity in crisis times by obviating the need for raising capital precisely then when bank profits are low and access to shareholder funds is costly. In sum, our evidence suggests bank capital should be raised in good times, not in bad times.

However, the supply of credit to more leveraged firms with higher yields can increase hence higher bank capital may not always imply lower bank moral hazard (Gale (2010)). On the other hand, there is behavior consistent with risk-shifting when changing capital requirements in crisis times to banks with low capital. Therefore, on risk-taking and regulatory arbitrage, both crucial for financial stability, our approach *per se* suggests that supervisors should collect exhaustive micro data and track – i.e., *supervise* – in real time potential deviations from policy intentions.

REFERENCES

- Admati, A.R., and M.F. Hellwig. 2013. *The Bankers' New Clothes: What's Wrong with Banking and What to Do About It*. Princeton: Princeton University Press.
- Adrian, T., and H.S. Shin. 2011. "Financial Intermediaries and Monetary Economics." In *Handbook of Monetary Economics 3a*, edited by B.M. Friedman and M. Woodford, 601-50. NY: Elsevier.
- Aiyar, S., C.W. Calomiris, and T. Wieladek. 2014. "Does Macro-Pru Leak? Evidence from a Uk Policy Experiment." *J. Money, Credit, and Banking* 46 181-214.
- Allen, F., and D. Gale. 2007. *Understanding Financial Crises*. NY: OUP.
- Berger, A., and G.F. Udell. 1994. "Did Risk-Based Capital Allocate Bank Credit and Cause a "Credit Crunch" in the United States?" *J. Money, Credit, and Banking* 26 (3): 585-628.

- Berger, A.N., and G.F. Udell. 2004. "The Institutional Memory Hypothesis and the Procyclicality of Bank Lending Behavior." *J. Finan. Intermediation* 13 (4): 458-95.
- Bernanke, B.S. 1983. "Nonmonetary Effects of the Financial Crisis in the Propagation of the Great Depression." *A.E.R.* 73 257-76.
- Bernanke, B.S., and M. Gertler. 1989. "Agency Costs, Net Worth, and Business Fluctuations." *A.E.R.* 79 (1): 14-31.
- Bernanke, B.S., and C.S. Lown. 1991. "The Credit Crunch." *Brookings Pap. Econ. Act.*: 205-39.
- Borio, C. 2003. "Towards a Macroprudential Framework for Financial Supervision and Regulation." *CESifo Economic Studies* 49 181-215.
- Chodorow-Reich, G. 2014. "The Employment Effects of Credit Market Disruptions: Firm-Level Evidence from the 2008-09 Financial Crisis." *Q.J.E.* 129 1-59.
- Dell'Ariccia, G., and R. Marquez. 2006. "Lending Booms and Lending Standards." *J. Finance* 61 (5): 2511-46.
- Dewatripont, M., and J. Tirole. 2012. "Macroeconomic Shocks and Banking Regulation." *J. Money, Credit, and Banking* 44 237-54.
- Diamond, D.W., and R.G. Rajan. 2001. "Liquidity Risk, Liquidity Creation, and Financial Fragility: A Theory of Banking." *J.P.E.* 109 (2): 287-327.
- . 2006. "Money in a Theory of Banking." *A.E.R.* 96 (1): 30-53.
- Farhi, E., and I. Werning. 2014. "A Theory of Macroprudential Policies in the Presence of Nominal Rigidities." Cambridge: Harvard University.
- Flannery, M.J., and K.P. Rangan. 2008. "What Caused the Bank Capital Build-up of the 1990s?" *Rev. Finan.* 12 (2): 391-429.
- Freixas, X., L. Laeven, and J.-L. Peydró. 2015. *Systemic Risk, Crises and Macroprudential Policy*. Cambridge: MIT Press.
- Freixas, X., and J.C. Rochet. 2008. *Microeconomics of Banking*. Cambridge: MIT Press.
- Gale, D. 2010. "Capital Regulation and Risk Sharing." *Int. J. Centr. Bank.* 6 (4): 187-204.
- Gale, D., and O. Özgür. 2005. "Are Bank Capital Ratios Too High or Too Low? Incomplete Markets and Optimal Capital Structure." *J. European. Econ. Assoc.* 3 (2-3): 690-700.
- Gersbach, H., and J.-C. Rochet. 2012. "Aggregate Investment Externalities and Macroprudential Regulation." *J. Money, Credit Banking* 44 (S2): 73-109.
- Gourinchas, P.-O., and M. Obstfeld. 2012. "Stories of the Twentieth Century for the Twenty-First." *American Econ. J.: Macro.* 4 226-65.
- Guttentag, J., and R. Herring. 1984. "Credit Rationing and Financial Disorder." *J. Finance* 39 1359-82.
- Hanson, S., A.K. Kashyap, and J.C. Stein. 2011. "A Macroprudential Approach to Financial Regulation." *J. Econ. Perspect.* 25 (1): 3-28.
- Harris, M., C.C. Opp, and M.M. Opp. 2015. "Macroprudential Bank Capital Regulation in a Competitive Financial System." Chicago: University of Chicago.
- Holmstrom, B., and J. Tirole. 1997. "Financial Intermediation, Loanable Funds, and the Real Sector." *Q.J.E.* 112 663-91.
- Jeanne, O., and A. Korinek. 2012. "Managing Credit Booms and Busts: A Pigouvian Taxation Approach." Cambridge: National Bureau of Economic Research.
- Jiménez, G., A. Mian, J.-L. Peydró, and J. Saurina. 2014a. "Local Versus Aggregate Lending Channels: The Effects of Securitization on Corporate Credit Supply." Madrid: Banco de España.

- Jiménez, G., S. Ongena, J.-L. Peydró, and J. Saurina. 2012. "Credit Supply and Monetary Policy: Identifying the Bank Balance-Sheet Channel with Loan Applications." *A.E.R.* 102 (5): 2301-26.
- . 2014b. "Hazardous Times for Monetary Policy: What Do Twenty-Three Million Bank Loans Say About the Effects of Monetary Policy on Credit Risk-Taking?" *Econometrica* 82 (2): 463-505.
- Kashyap, A.K., R. Berner, and C.A.E. Goodhart. 2011. "The Macroprudential Toolkit." *IMF Econ. Rev.* 59 (2): 145-61.
- Khwaja, A.I., and A. Mian. 2008. "Tracing the Impact of Bank Liquidity Shocks: Evidence from an Emerging Market." *A.E.R.* 98 (4): 1413-42.
- Kim, D., and A.M. Santomero. 1988. "Risk in Banking and Capital Regulation." *J. Finance* 43 (5): 1219-33.
- Kindleberger, C.P. 1978. *Manias, Panics, and Crashes: A History of Financial Crises*. New York: Basic Books.
- Kiyotaki, N., and J. Moore. 1997. "Credit Cycles." *J.P.E.* 105 211-48.
- Koehn, M., and A.M. Santomero. 1980. "Regulation of Bank Capital and Portfolio Risk." *J. Finance* 35 (5): 1235-44.
- Korinek, A., and A. Simsek. 2014. "Liquidity Trap and Excessive Leverage." Baltimore: Johns Hopkins University.
- Laeven, L., and G. Majnoni. 2003. "Loan Loss Provisioning and Economic Slowdowns: Too Much, Too Late?" *J. Finan. Intermediation* 12 (2): 178-97.
- Lim, C.H., F. Columba, A. Costa, P. Kongsamut, A. Otani, M. Saiyid, T. Wezel, and X. Wu. 2011. "Macroprudential Policy: What Instruments and How to Use Them? Lessons from Country Experiences." Washington DC: IMF.
- Lorenzoni, G. 2008. "Inefficient Credit Booms." *Rev. Econ. Studies* 75 (3): 809-33.
- Malherbe, F. 2012. "Dynamic Macro-Prudential Regulation." London: LBS.
- Matsuyama, K. 2007. "Credit Traps and Credit Cycles." *A.E.R.* 97 (1): 503-16.
- Morrison, A., and L. White. 2005. "Crises and Capital Requirements in Banking." *A.E.R.* 95 (5): 1548-72.
- Peek, J., and E.S. Rosengren. 2000. "Collateral Damage: Effects of the Japanese Bank Crisis on Real Activity in the United States." *A.E.R.* 90 30-45.
- Rajan, R.G. 1994. "Why Bank Credit Policies Fluctuate: A Theory and Some Evidence." *Q.J.E.* 109 399-441.
- Reinhart, C.M., and K.S. Rogoff. 2009. "The Aftermath of Financial Crises." *A.E.R.* 99 (2): 466-72.
- Repullo, R., J. Saurina, and C. Trucharte. 2010. "Mitigating the Pro-Cyclicality of Basel II." *Econ. Pol.* 64 659-702.
- Ruckes, M. 2004. "Bank Competition and Credit Standards." *Rev. Finan. Studies* 17 (4): 1073-102.
- Saurina, J. 2009. "Dynamic Provisioning. The Experience of Spain." Washington DC: World Bank.
- Schularick, M., and A.M. Taylor. 2012. "Credit Booms Gone Bust: Monetary Policy, Leverage Cycles, and Financial Crises, 1870–2008." *A.E.R.* 102 (2): 1029-61.
- Shleifer, A., and R.W. Vishny. 2010. "Unstable Banking." *J. Finan. Econ.* 97 (3): 306-18.
- Tirole, J. 2011. "Systemic Risk Regulation." Barcelona: GSE.
- Yellen, J.L. 2011. "Pursuing Financial Stability at the Federal Reserve." Chicago IL: Federal Reserve Bank of Chicago.

TABLE 1

SUMMARY STATISTICS FOR DEPENDENT AND INDEPENDENT VARIABLES USED IN THE LOAN AND FIRM LEVEL ANALYSIS OF THE INTRODUCTION OF DYNAMIC PROVISIONING IN 2000:Q3

| Level of Analysis, Variable Type and Variable Name | Unit | Standard | | | | |
|------------------------------------------------------------|---------------|----------|-----------|---------|--------|---------|
| | | Mean | Deviation | Minimum | Median | Maximum |
| Loan Level | | | | | | |
| <i>Dependent Variables (bank - firm; 2000:Q1-2001:Q2)</i> | | | | | | |
| Δlog Commitment | - | -0.02 | 0.77 | -2.34 | -0.03 | 2.47 |
| Δlog Drawn | - | -0.01 | 0.81 | -2.30 | -0.03 | 2.51 |
| Loan Dropped? | 0/1 | 0.25 | 0.43 | 0 | 0 | 1 |
| ΔLong-Term Maturity Rate (>1 year) | - | 0.00 | 0.32 | -1.00 | 0.00 | 1.00 |
| ΔCollateralization Rate | - | 0.00 | 0.18 | -1.00 | 0.00 | 1.00 |
| ΔDrawn to Committed Ratio | - | -0.23 | 0.32 | -1.00 | -0.20 | 1.00 |
| <i>Bank Dynamic Provisioning (bank)</i> | | | | | | |
| Dynamic Provision(for 1998:Q4) | % | 0.26 | 0.10 | 0.00 | 0.22 | 0.86 |
| Dynamic Provision Funds(2001:Q2) | % | 0.49 | 0.30 | 0.00 | 0.43 | 7.27 |
| ΔLn(Specific Funds+General Funds)(2007:Q4-2010:Q4) | - | 0.28 | 0.14 | -4.92 | 0.25 | 1.55 |
| <i>Other Bank Characteristics (bank)</i> | | | | | | |
| Ln(Total Assets) | Ln(000 Euros) | 17.03 | 1.72 | 9.08 | 17.12 | 19.56 |
| Capital Ratio | % | 6.01 | 2.08 | 0.00 | 5.29 | 53.86 |
| Liquidity Ratio | % | 28.40 | 8.78 | 0.03 | 29.17 | 93.47 |
| ROA | % | 1.33 | 0.74 | -16.08 | 1.08 | 4.69 |
| Doubtful Ratio | % | 1.15 | 0.48 | 0.00 | 1.03 | 3.29 |
| Commercial Bank | 0/1 | 0.60 | 0.49 | 0 | 1 | 1 |
| Savings Bank | 0/1 | 0.35 | 0.48 | 0 | 0 | 1 |
| <i>Firm Characteristics (firm)</i> | | | | | | |
| Ln(Total Assets) | Ln(000 Euros) | 7.37 | 1.58 | 2.20 | 7.16 | 17.12 |
| Capital Ratio | % | 23.32 | 17.03 | 0.00 | 19.67 | 97.96 |
| Liquidity Ratio | % | 5.66 | 7.77 | 0.00 | 2.94 | 100.00 |
| ROA | % | 7.32 | 7.32 | -25.50 | 6.28 | 55.36 |
| Bad Credit History | 0/1 | 0.16 | 0.37 | 0 | 0 | 1 |
| Interest Paid | - | 0.08 | 0.05 | 0.00 | 0.07 | 0.33 |
| Ln(Age+1) | Ln(1+Years) | 2.30 | 0.79 | 0.00 | 2.40 | 4.87 |
| Tangible Assets | % | 24.91 | 21.72 | 0.00 | 19.22 | 100.00 |
| <i>Bank-Firm Relationship Characteristic (bank - firm)</i> | | | | | | |
| Ln(1+Number of months with the bank) | Ln(1+Months) | 3.52 | 1.26 | 0.00 | 3.76 | 5.21 |
| <i>Loan Characteristics (bank - firm)</i> | | | | | | |
| Maturity <1 year | 0/1 | 0.57 | 0.44 | 0 | 1 | 1 |
| Maturity 1-5 years | 0/1 | 0.27 | 0.39 | 0 | 0 | 1 |
| Collateralized Loan | 0/1 | 0.15 | 0.33 | 0 | 0 | 1 |
| Ln(Loan Amount) | Ln(000 Euros) | 4.00 | 1.95 | 0.00 | 4.20 | 13.46 |
| Firm Level | | | | | | |
| <i>Dependent Variables (firm)</i> | | | | | | |
| Δlog Commitment (2000:Q1-2001:Q2) | - | -0.07 | 0.59 | -2.63 | -0.07 | 2.19 |
| Δlog Total Assets (1999:Q4-2001:Q4) | - | 0.44 | 0.35 | -0.61 | 0.40 | 1.82 |
| Δlog Employees (1999:Q4-2001:Q4) | - | 0.11 | 0.41 | -1.39 | 0.05 | 1.70 |
| Firm Death? (2000-2001) | 0/1 | 0.03 | 0.16 | 0 | 0 | 1 |

NOTE. -- Table A.1 contains all variable definitions. The number observations at the loan level: 416,611; at the firm level: 76,593.

TABLE 2
LOAN AND FIRM LEVEL ANALYSIS OF THE EFFECTS OF THE INTRODUCTION OF DYNAMIC PROVISIONING IN 2000:Q3

| Model Stage | (1) | (2) | (3) | (4) | (5) | (6) Stage 1 | (6) Stage 2 | (7) |
|----------------------------------------------------------------------------|-----------------------------------|-----------------------------------|-----------------------------------|-----------------------------------|-----------------------------------|------------------------------------------------|-----------------------------------|------------------------------|
| Level | Loan | | | | | | | |
| Dependent Variable | Δlog Commitment (2000:Q1-2001:Q2) | Δlog Commitment (2000:Q1-2001:Q2) | Δlog Commitment (2000:Q1-2001:Q2) | Δlog Commitment (2000:Q1-2001:Q2) | Δlog Commitment (2000:Q1-2001:Q2) | Dynamic Provision Funds (2001:Q3) _b | Δlog Commitment (2000:Q1-2001:Q2) | Δlog Drawn (2000:Q1-2001:Q2) |
| Dynamic Provision(for 1998:Q4) _b | -0.357 *** (.124) | -0.397 *** (.107) | -0.335 *** (.111) | -0.426 *** (.123) | -0.394 ** (.186) | 0.711 *** (.186) | | -0.451 *** (.109) |
| Dynamic Provision Funds(2001:Q3) _b | | | | | | | -0.558 *** (.162) | |
| <i>The resultant impact of</i> Dynamic Provision(for 1998:Q4) _b | | | | | | | -0.397 | |
| Loan Characteristics | No | No | Yes | No | No | No | No | No |
| Firm Characteristics & Province and Industry Fixed Effects | -- | -- | -- | -- | Yes | -- | -- | -- |
| Firm Fixed Effects | Yes | -- | -- | -- | No | -- | -- | -- |
| Firm * Bank Type Fixed Effects | No | Yes | Yes | Yes | No | Yes | Yes | Yes |
| Sample with Firm Characteristics Only | No | No | No | Yes | Yes | No | No | No |
| Cluster | Bank, Firm | Bank, Firm | Bank, Firm | Bank, Firm | Bank, Firm | Bank, Firm | Bank, Firm | Bank, Firm |
| Number of Observations | 416,611 | 273,518 | 273,518 | 167,034 | 237,905 | 273,518 | 273,518 | 242,452 |

| Model | (8) | (9) | (10) | (11) | (12) | (13) | (14) | (15) | (16) | |
|------------------------------------------------------------|-----------------|------------------------------------------------------|-------------------------------------------|---------------------------------------------|-----------------------------------|-----------------------------------|-------------------------------------|----------------------------------|-------------------------|--|
| Level | Loan | | | | Firm | | | | | |
| Dependent Variable | Loan Dropped? | ΔLong-Term Maturity Rate (>1 year) (2000:Q1-2001:Q2) | ΔCollateralization Rate (2000:Q1-2001:Q2) | ΔDrawn to Committed Ratio (2000:Q1-2001:Q2) | Δlog Commitment (2000:Q1-2001:Q2) | Δlog Commitment (2000:Q1-2001:Q2) | Δlog Total Assets (1999:Q4-2001:Q4) | Δlog Employees (1999:Q4-2001:Q4) | Firm Death? (2000-2001) | |
| Dynamic Provision(for 1998:Q4) _b | 0.061 (.137) | -0.165 *** (.047) | 0.060 *** (.022) | -0.069 * (.04) | -0.019 (.067) | 0.006 (.098) | -0.086 (.054) | -0.099 (.067) | 0.006 (.016) | |
| Loan Characteristics | Yes | Yes | Yes | Yes | No | Yes | No | No | No | |
| Firm Characteristics & Province and Industry Fixed effects | -- | -- | -- | -- | Yes | Yes | Yes | Yes | Yes | |
| Firm * Bank Type Fixed Effects | Yes | Yes | Yes | Yes | >< | >< | >< | >< | >< | |
| Sample with Firm Characteristics Only | No | No | No | No | Yes | Yes | Yes | Yes | Yes | |
| Cluster | Bank, Firm | Bank, Firm | Bank, Firm | Bank, Firm | Main Bank | Main Bank | Main Bank | Main Bank | Main Bank | |
| Number of Observations | 384,419 | 273,518 | 273,518 | 131,077 | 76,593 | 76,593 | 59,449 | 41,146 | 71,227 | |

NOTE. -- Model 1 corresponds to Equation 3; the relevant text explains Models 1 to 11. Model 12 corresponds to Equation 4; the relevant text explains Models 12 to 16. The sample analyzed starts from the set of firms with multiple bank-firm relationships. Table 1 contains the the summary statistics for each included variable and the list of variables for each set of characteristics and Table A.1 the definition of all variables. All specifications in this Table include Other Bank and Bank-Firm Relationship Characteristics in addition to those mentioned. The Ln(Loan Amount) included in the Loan Characteristics is averaged from 1998:Q4 to 1999:Q4. Coefficients are listed in the first row, robust standard errors that are corrected for clustering at the indicated level are reported in the row below, and the corresponding significance levels are in the adjacent column. "Yes" indicates that the set of characteristics or fixed effects is included. "No" indicates that the set of characteristics or fixed effects is not included. "><" indicates that the set of fixed effects cannot be included (because the regression is cross-sectional at the level of the fixed effects). "--" indicates that the indicated set of characteristics or fixed effects are comprised in the wider included set of fixed effects. *** Significant at 1%, ** significant at 5%, * significant at 10%.

TABLE 3
TWO STAGE MODELS WHICH ALLOW THE EFFECT OF CHANGES IN DYNAMIC PROVISIONING ON LENDING TO GO THROUGH THE CHANGES IN THE SPECIFIC AND GENERAL FUNDS

| Model Stage | (1) | | (2) | | (3) | |
|----------------------------------------------------------------------------------------------------|----------------------------------------------------------------------------------------------|-------------------------------------------------------|----------------------------------------------------------------------------------------------|-------------------------------------------------------|----------------------------------------------------------------------------------------------|-------------------------------------------------------|
| | Stage 1 | Stage 2 | Stage 1 | Stage 2 | Stage 1 | Stage 2 |
| | Dependent Variable | | Dependent Variable | | Dependent Variable | |
| | $\Delta \ln(\text{Specific Funds} + \text{General Funds})$ (2000:Q1-2001:Q2) _b | $\Delta \log \text{ Commitment}$ (2000:Q1-2001:Q2) | $\Delta \ln(\text{Specific Funds} + \text{General Funds})$ (2007:Q4-2010:Q4) _b | $\Delta \log \text{ Commitment}$ (2008:Q1-2010:Q4) | $\Delta \ln(\text{Specific Funds} + \text{General Funds})$ (2011:Q4-2012:Q4) _b | $\Delta \log \text{ Commitment}$ (2011:Q4-2012:Q4) |
| Dynamic Provision(for 1998:Q4) _b | 0.930 *** (.142) | | | | | |
| Dynamic Provision Funds/Assets(2007:Q4) _b | | | -0.866 *** (.203) | | | |
| Loans to Construction & Real Estate/Total Loans to Firms(2011:Q4) _b | | | | | 2.300 *** (.293) | |
| $\Delta \ln(\text{Specific Funds} + \text{General Funds})(2000:Q1-2001:Q2)$ _b | | -0.427 *** (.109) | | | | |
| $\Delta \ln(\text{Specific Funds} + \text{General Funds})(2007:Q4-2010:Q4)$ _b | | | | -0.335 ** (.168) | | |
| $\Delta \ln(\text{Specific Fund} + \text{General Fund})(2011:Q4 \text{ to } 2012:Q4)$ _b | | | | | | -0.093 *** (.027) |
| <i>The resultant impact on Alog Commitment of</i> | | | | | | |
| Dynamic Provision(for 1998:Q4) _b | | -0.397 | | | | |
| Dynamic Provision Funds/Assets(2007:Q4) _b | | | | 0.290 | | |
| Loans to Construction & Real Estate/Total Loans to Firms(2011:Q4) _b | | | | | | -0.215 |
| Firm * Bank Type Fixed Effects | Yes | Yes | Yes | Yes | Yes | Yes |
| Cluster | Bank, Firm | Bank, Firm | Bank, Firm | Bank, Firm | Bank, Firm | Bank, Firm |
| Number of Observations | 273,518 | 273,518 | 358,023 | 358,023 | 289,390 | 289,390 |

NOTE. -- The models correspond to a two-stage versions of Equation 3; the relevant text explains these models. The sample analyzed is the set of firms with multiple bank-firm relationships in Models 1 and 2 and from the set of non-construction or real estate firms with multiple bank-firm relationships in Model 3. Tables 1, 5 and 8 contain the summary statistics for each included variable and the list of variables for each set of characteristics and Table A.1 the definition of all variables. All specifications in this Table include Other Bank and Bank-Firm Relationship Characteristics in addition to those mentioned. Coefficients are listed in the first row, robust standard errors that are corrected for clustering at the indicated level are reported in the row below, and the corresponding significance levels are in the adjacent column. "Yes" indicates that the set of characteristics or fixed effects is included. "No" indicates that the set of characteristics or fixed effects is not included. "> <" indicates that the set of fixed effects cannot be included (because the regression is cross-sectional at the level of the fixed effects). "--" indicates that the indicated set of characteristics or fixed effects are comprised in the wider included set of fixed effects. *** Significant at 1%, ** significant at 5%, * significant at 10%.

TABLE 4
ANALYSIS OF THE CHANGES IN COMMITTED LENDING AT THE INTRODUCTION OF DYNAMIC PROVISIONING IN 2000:Q3
ACROSS BANKS AND FIRMS

| Model | (1) | (2) | (3) | (4) | (5) |
|-----------------------------------------------------------------------|----------------------|----------------------|---------------------|----------------------|----------------------|
| Dynamic Provision(for 1998:Q4) _b [=DP _b] | -0.987 *** (.199) | | | | |
| DP _b * Ln(Total Assets _b) | 0.302 *** (.061) | | | | |
| DP _b * Capital Ratio _b | -0.046 (.045) | | | | |
| DP _b * ROA _b | -0.067 (.109) | | | | |
| DP _b * Doubtful Ratio _b | -0.222 (.19) | | | | |
| DP _b * Ln(Total Assets _f) | 0.111 *** (.037) | 0.115 *** (.038) | | 0.061 ** (.028) | 0.115 *** (.038) |
| DP _b * Capital Ratio _f | -0.010 *** (.003) | -0.010 *** (.003) | | -0.008 *** (.002) | -0.010 *** (.003) |
| DP _b * ROA _f | -0.004 (.005) | -0.004 (.005) | | 0.000 (.003) | -0.004 (.005) |
| DP _b * Bad Credit History _f | -0.135 (.086) | -0.139 (.087) | 0.031 (.053) | -0.029 (.073) | -0.129 (.09) |
| DP _b * Interest Paid _f | 1.300 ** (.557) | 1.309 ** (.559) | | | 1.280 ** (.56) |
| DP _b * Future Default(2001-2005) _f | | | 0.255 *** (.073) | 0.145 ** (.071) | 0.068 (.079) |
| DP _b * Ln(1+Number of months with the bank) _{b,f} | -0.009 (.035) | -0.020 (.035) | -0.033 (.038) | -0.047 (.037) | -0.019 (.035) |
| Firm * Bank Type Fixed Effects | Yes | Yes | Yes | Yes | Yes |
| Bank Fixed effects | No | Yes | Yes | Yes | Yes |
| Cluster | Bank, Firm | Bank, Firm | Bank, Firm | Bank, Firm | Bank, Firm |
| Number of Observations | 77,483 | 77,483 | 77,483 | 77,483 | 77,483 |

NOTE. -- The dependent variable is the Δ log Commitment (2000:Q1-2001:Q2). The sample analyzed is the set of firms with multiple bank-firm relationships and firm characteristics. Table A.1 contains all variable definitions. All specifications in this Table include Other Bank and Bank-Firm Relationship Characteristics in addition to those mentioned. Coefficients are listed in the first row, robust standard errors that are corrected for clustering at the indicated level are reported in the row below, and the corresponding significance levels are in the adjacent column. "Yes" indicates that the set of characteristics or fixed effects is included. "No" indicates that the set of characteristics or fixed effects is not included. *** Significant at 1%, ** significant at 5%, * significant at 10%.

TABLE 5

SUMMARY STATISTICS FOR DEPENDENT AND INDEPENDENT VARIABLES USED IN THE LOAN AND FIRM LEVEL ANALYSIS OF THE EFFECTS OF GOING INTO THE CRISIS WITH A CERTAIN LEVEL OF DYNAMIC PROVISION FUNDS BUILT UP IN 2007:Q4 AND OF THE FLOOR REMOVAL OF DYNAMIC PROVISIONING IN 2008:Q4

| Level of Analysis, Variable Type and Variable Name | Unit | Standard | | | | |
|------------------------------------------------------------|---------------|----------|-----------|---------|--------|---------|
| | | Mean | Deviation | Minimum | Median | Maximum |
| Loan Level | | | | | | |
| <i>Dependent Variables (bank - firm; 2008:Q1-2010:Q4)</i> | | | | | | |
| Δ log Commitment | - | -0.34 | 0.97 | -8.82 | -0.22 | 10.37 |
| Δ log Drawn | - | -0.28 | 1.08 | -9.88 | -0.21 | 11.94 |
| Loan Dropped? | 0/1 | 0.42 | 0.49 | 0 | 0 | 1 |
| Δ Long-Term Maturity Rate (>1 year) | - | 0.11 | 0.42 | -1.00 | 0.00 | 1.00 |
| Δ Collateralization Rate | - | 0.07 | 0.28 | -1.00 | 0.00 | 1.00 |
| Δ Drawn to Committed Ratio | - | -0.31 | 0.33 | -1.00 | -0.29 | 1.00 |
| <i>Bank Dynamic Provisioning (bank)</i> | | | | | | |
| Dynamic Provision Funds(2007:Q4) | % | 1.17 | 0.23 | 0.06 | 1.14 | 2.57 |
| d(Dynamic Provision Funds<1.25) | 0/1 | 0.61 | 0.49 | 0 | 1 | 1 |
| Simulated Dynamic Provision Funds(2007:Q4 for 2000:Q3) | % | 0.69 | 0.16 | 0.00 | 0.65 | 2.08 |
| Δ Ln(Specific Funds+General Funds)(2007:Q4-2010:Q4) | - | 0.48 | 0.37 | -1.43 | 0.31 | 3.97 |
| <i>Other Bank Characteristics (bank)</i> | | | | | | |
| Ln(Total Assets) | Ln(000 Euros) | 17.86 | 1.49 | 9.10 | 18.17 | 19.73 |
| Capital Ratio | % | 5.57 | 1.93 | 1.72 | 5.28 | 73.29 |
| Liquidity Ratio | % | 12.40 | 6.22 | 0.36 | 10.64 | 97.25 |
| ROA | % | 1.10 | 0.56 | -0.23 | 0.95 | 3.44 |
| Doubtful Ratio | % | 1.14 | 0.66 | 0.00 | 0.93 | 12.05 |
| Commercial Bank | 0/1 | 0.51 | 0.50 | 0 | 1 | 1 |
| Savings Bank | 0/1 | 0.43 | 0.49 | 0 | 0 | 1 |
| <i>Firm Characteristics (firm)</i> | | | | | | |
| Ln(Total Assets) | Ln(000 Euros) | 8.04 | 1.68 | 2.20 | 7.82 | 18.24 |
| Capital Ratio | % | 23.47 | 17.66 | 0.00 | 19.37 | 99.47 |
| Liquidity Ratio | % | 4.78 | 7.53 | 0.00 | 2.05 | 99.05 |
| ROA | % | 5.66 | 6.87 | -32.58 | 4.85 | 55.88 |
| Bad Credit History | 0/1 | 0.13 | 0.34 | 0 | 0 | 1 |
| Interest Paid | | 0.06 | 0.04 | 0.00 | 0.05 | 0.33 |
| Ln(Age+1) | Ln(1+Years) | 2.54 | 0.70 | 0.00 | 2.64 | 4.93 |
| Tangible Assets | % | 25.68 | 23.65 | 0.00 | 18.86 | 100.00 |
| <i>Bank-Firm Relationship Characteristic (bank - firm)</i> | | | | | | |
| Ln(1+Number of months with the bank) | Ln(1+Months) | 3.82 | 1.17 | 0.00 | 3.97 | 5.63 |
| <i>Loan Characteristics (bank - firm)</i> | | | | | | |
| Maturity <1 year | 0/1 | 0.50 | 0.44 | 0 | 1 | 1 |
| Maturity 1-5 years | 0/1 | 0.25 | 0.38 | 0 | 0 | 1 |
| Collateralized loans | 0/1 | 0.24 | 0.40 | 0 | 0 | 1 |
| Ln(Loan amount) | Ln(000 Euros) | 5.19 | 1.52 | 0.86 | 5.02 | 13.90 |
| Firm Level | | | | | | |
| <i>Dependent Variables (firm)</i> | | | | | | |
| Δ log Commitment(2008:Q1 to 2010:Q4) | - | -0.39 | 0.64 | -3.31 | -0.29 | 1.82 |
| Δ Log Total Assets(2007:Q4 to 2010:Q4) | - | -0.01 | 0.36 | -1.18 | -0.02 | 1.24 |
| Δ Log Employees(2007:Q4 to 2010:Q4) | - | -0.14 | 0.52 | -1.95 | -0.10 | 1.61 |
| Firm Death?(2008-2010) | 0/1 | 0.06 | 0.24 | 0.00 | 0.00 | 1.00 |

NOTE. -- Table A.1 contains all variable definitions. The number observations at the loan level: 557,251; at the firm level: 102,790.

TABLE 6
 LOAN AND FIRM LEVEL ANALYSIS OF THE EFFECTS OF GOING INTO THE CRISIS WITH A CERTAIN LEVEL OF DYNAMIC PROVISION FUNDS BUILT UP AS OF 2007:Q4 AND OF THE FLOOR LOWERING IN 2008:Q4 FROM 33 TO 10 PERCENT FOR DYNAMIC PROVISION FUNDS OVER LATENT LOAN LOSSES

| Model | (1) | (2) | (3) | (4) | (5) | (6) | (6) | (7) |
|------------------------------------------------------------------------------|--------------------------------------------|--------------------------------------------|--------------------------------------------|--------------------------------------------|--------------------------------------------|------------------------------------------------|--------------------------------------------|---------------------------------------|
| Stage | | | | | | Stage 1 | Stage 2 | |
| Level | Loan | | | | | | | |
| Dependent Variable | $\Delta \log$ Commitment (2008:Q1-2010:Q4) | $\Delta \log$ Commitment (2008:Q1-2010:Q4) | $\Delta \log$ Commitment (2008:Q1-2010:Q4) | $\Delta \log$ Commitment (2008:Q1-2010:Q4) | $\Delta \log$ Commitment (2008:Q1-2010:Q4) | Dynamic Provision Funds (2007:Q4) _b | $\Delta \log$ Commitment (2008:Q1-2010:Q4) | $\Delta \log$ Drawn (2008:Q1-2010:Q4) |
| Dynamic Provision Funds(2007:Q4) _b | 0.247 *** (.079) | 0.295 *** (.098) | 0.238 *** (.089) | 0.348 *** (.111) | 0.265 ** (.107) | | 0.735 *** (.146) | 0.293 *** (.11) |
| d(Dynamic Provision Funds<1.25) _b | 0.100 *** (.028) | 0.114 *** (.035) | 0.116 *** (.031) | 0.125 *** (.037) | 0.091 ** (.037) | | 0.123 *** (.031) | 0.119 *** (.11) |
| Simulated Dynamic Provision Funds(2007:Q4 for 2000:Q3) _b | | | | | | 0.634 *** (.089) | | |
| The resultant impact of Dynamic Provision Funds/Assets(2007:Q4) _b | | | | | | | 0.466 | |
| Loan Characteristics | No | No | Yes | No | No | No | No | No |
| Firm Characteristics & Province and Industry Fixed effects | -- | -- | -- | -- | Yes | -- | -- | -- |
| Firm Fixed effects | Yes | -- | -- | -- | No | -- | -- | -- |
| Firm * Bank Type Fixed Effects | No | Yes | Yes | Yes | No | Yes | Yes | Yes |
| Sample with Firm Characteristics Only | No | No | No | Yes | Yes | No | No | No |
| Cluster | Bank, Firm | Bank, Firm | Bank, Firm | Bank, Firm | Bank, Firm | Bank, Firm | Bank, Firm | Bank, Firm |
| Number of Observations | 557,251 | 358,023 | 358,023 | 167,034 | 319,873 | 358,023 | 358,023 | 325,505 |

| Model | (8) | (9) | (10) | (11) | (12) | (13) | (14) | (15) | (16) | |
|------------------------------------------------------------|---------------------|--------------------------------------------------------------|---------------------------------------------------|-----------------------------------------------------|--------------------------------------------|--------------------------------------------|----------------------------------------------|-------------------------------------------|-------------------------|--|
| Level | Loan | | | | Firm | | | | | |
| Dependent Variable | Loan Dropped? | Δ Long-Term Maturity Rate (>1 year) (2008:Q1-2010:Q4) | Δ Collateralization Rate (2008:Q1-2010:Q4) | Δ Drawn to Committed Ratio (2008:Q1-2010:Q4) | $\Delta \log$ Commitment (2008:Q1-2010:Q4) | $\Delta \log$ Commitment (2008:Q1-2010:Q4) | $\Delta \log$ Total Assets (2007:Q4-2010:Q4) | $\Delta \log$ Employees (2007:Q4-2010:Q4) | Firm Death? (2008-2010) | |
| Dynamic Provision Funds(2007:Q4) _b | -0.099 ** (.046) | -0.282 *** (.066) | 0.046 *** (.016) | 0.046 * (.024) | 0.092 ** (.043) | 0.083 * (.038) | 0.011 (.018) | 0.056 * (.029) | -0.013 ** (.007) | |
| d(Dynamic Provision Funds<1.25) _b | -0.041 ** (.018) | -0.046 * (.025) | 0.008 * (.005) | 0.029 *** (.009) | 0.019 (.013) | 0.026 (.016) | -0.001 (.006) | -0.004 (.007) | 0.003 (.003) | |
| Loan Characteristics | Yes | Yes | Yes | Yes | No | Yes | No | No | No | |
| Firm Characteristics & Province and Industry Fixed effects | -- | -- | -- | -- | Yes | Yes | Yes | Yes | Yes | |
| Firm * Bank Type Fixed Effects | Yes | Yes | Yes | Yes | > < | > < | > < | > < | > < | |
| Sample with Firm Characteristics Only | No | No | No | No | Yes | Yes | Yes | Yes | Yes | |
| Cluster | Bank, Firm | Bank, Firm | Bank, Firm | Bank, Firm | Main Bank | Main Bank | Main Bank | Main Bank | Main Bank | |
| Number of Observations | 684,940 | 358,023 | 358,023 | 219,922 | 102,790 | 102,790 | 57,445 | 51,979 | 102,804 | |

NOTE. -- Model 1 corresponds to Equation 3; the relevant text explains Models 1 to 11. Model 12 corresponds to Equation 4; the relevant text explains Models 12 to 16. The sample analyzed starts from the set of firms with multiple bank-firm relationships. Table 4 contains the list of variables for each set of characteristics and Table A.1 the definition of all variables. All specifications in this Table include Other Bank and Bank-Firm Relationship Characteristics in addition to those mentioned. The Ln(Loan Amount) included in the Loan Characteristics is averaged from 2005:Q4 to 2007:Q1. Coefficients are listed in the first row, robust standard errors that are corrected for clustering at the indicated level are reported in the row below, and the corresponding significance levels are in the adjacent column. "Yes" indicates that the set of characteristics or fixed effects is included. "No" indicates that the set of characteristics or fixed effects is not included. "> <" indicates that the set of fixed effects cannot be included (because the regression is cross-sectional at the level of the fixed effects). "--" indicates that the indicated set of characteristics or fixed effects are comprised in the wider included set of fixed effects. *** Significant at 1%, ** significant at 5%, * significant at 10%.

TABLE 7
ANALYSIS OF THE CHANGES IN COMMITTED LENDING OF GOING INTO THE CRISIS WITH A
CERTAIN LEVEL OF DYNAMIC PROVISION FUNDS BUILT UP IN 2007:Q4 AND AND OF THE
FLOOR LOWERING IN 2008:Q4 FROM 33 TO 10 PERCENT FOR DYNAMIC PROVISION FUNDS
OVER LATENT LOAN LOSSES ACROSS BANKS AND FIRMS

| Model | (1) | (2) |
|-----------------------------------------------------------------------|----------------------|----------------------|
| Dynamic Provision Funds(2007:Q4) _b [=DPF _b] | 0.422 *** (.106) | |
| DPF _b * Ln(Total Assets) _b | 0.031 (.037) | |
| DPF _b * Capital Ratio _b | 0.068 ** (.03) | |
| DPF _b * ROA _b | -0.199 (.173) | |
| DPF _b * NPL _b | -0.218 *** (.057) | |
| DPF _b * Ln(Total Assets) _f | 0.009 (.019) | 0.010 (.021) |
| DPF _b * Capital Ratio _f | 0.000 (.001) | 0.000 (.001) |
| DPF _b * ROA _f | 0.001 (.002) | 0.001 (.002) |
| DPF _b * Bad Credit History _f | -0.033 (.043) | -0.023 (.042) |
| DPF _b * Interest Paid _f | 0.000 (.388) | -0.274 (.386) |
| DPF _b * Ln(1+Number of months with the bank) _{bf} | 0.025 (.019) | 0.017 (.016) |
| d(Dynamic Provision Funds<1.25) _b [=DP _b] | 0.090 *** (.029) | |
| DP _b * Ln(Total Assets) _b | -0.015 (.015) | |
| DP _b * Capital Ratio _b | -0.026 (.021) | |
| DP _b * ROA _b | -0.008 (.082) | |
| DP _b * NPL _b | -0.116 *** (.041) | |
| DP _b * Ln(Total Assets) _f | -0.002 (.008) | 0.001 (.008) |
| DP _b * Capital Ratio _f | -0.002 *** (.001) | -0.002 *** (.001) |
| DP _b * ROA _f | -0.001 (.001) | -0.001 (.001) |
| DP _b * Bad Credit History _f | -0.003 (.02) | -0.003 (.019) |
| DP _b * Interest Paid _f | -0.249 (.218) | -0.337 * (.204) |
| DP _b * Ln(1+Number of months with the bank) _{bf} | 0.015 ** (.007) | 0.013 * (.007) |
| Firm * Bank Type Fixed Effects | Yes | Yes |
| Bank Fixed effects | No | Yes |
| Cluster | Bank, Firm | Bank, Firm |
| Number of Observations | 208,137 | 208,137 |

NOTE. -- The dependent variable is the $\Delta \log$ Commitment(2008:Q1-2010:Q4). The sample analyzed is the set of firms with multiple bank-firm relationships and firm characteristics. Table A.1 contains all variable definitions. All specifications in this Table include Other Bank and Bank-Firm Relationship Characteristics in addition to those mentioned. Coefficients are listed in the first row, robust standard errors that are corrected for clustering at the indicated level are reported in the row below, and the corresponding significance levels are in the adjacent column. "Yes" indicates that the set of characteristics or fixed effects is included. *** Significant at 1%, ** significant at 5%, * significant at 10%.

TABLE 8
SUMMARY STATISTICS FOR DEPENDENT AND INDEPENDENT VARIABLES USED IN THE LOAN AND FIRM LEVEL ANALYSIS OF THE CHANGE IN SPECIFIC PROVISIONS DUE TO CONSTRUCTION & REAL ESTATE LOANS IN 2012

| Level of Analysis, Variable Type and Variable Name | Unit | Mean | Standard Deviation | Minimum | Median | Maximum |
|-----------------------------------------------------------------------|---------------|-------|--------------------|---------|--------|---------|
| Loan Level | | | | | | |
| <i>Dependent Variables (bank - firm; 2011:Q4-2012:Q4)</i> | | | | | | |
| Δlog Commitment | - | -0.15 | 0.51 | -1.99 | -0.09 | 1.54 |
| Δlog Drawn | - | -0.14 | 0.61 | -2.20 | -0.11 | 2.08 |
| Loan Dropped? | 0/1 | 0.15 | 0.36 | 0 | 0 | 1 |
| ΔLong-Term Maturity Rate (>1 year) | - | 0.48 | 0.97 | -1.00 | 0.00 | 113.00 |
| ΔCollateralization Rate | - | 0.16 | 0.68 | -1.00 | 0.00 | 113.00 |
| ΔDrawn to Committed Ratio | - | -0.19 | 0.25 | -1.00 | -0.15 | 1.00 |
| <i>Bank Loans to Construction and Real Estate (bank; for 2011:Q4)</i> | | | | | | |
| Loans to Construction and Real Estate/Total Loans to Firms | % | 0.36 | 0.08 | 0.02 | 0.38 | 0.64 |
| ΔLn(Specific Fund+General Fund)(2011:Q4 to 2012:Q4) | - | 0.53 | 0.33 | 0.08 | 0.53 | 1.15 |
| <i>Other Bank Characteristics (bank)</i> | | | | | | |
| Ln(Total Assets) | Ln(000 Euros) | 18.90 | 1.48 | 10.25 | 18.99 | 20.21 |
| Capital Ratio | % | 6.79 | 1.66 | 0.00 | 6.53 | 31.59 |
| Liquidity Ratio | % | 13.07 | 4.96 | 1.47 | 12.63 | 86.16 |
| ROA | % | -0.05 | 0.78 | -5.53 | 0.09 | 3.20 |
| Doubtful Ratio | % | 7.94 | 3.61 | 0.20 | 6.84 | 29.23 |
| Commercial Bank | 0/1 | 0.91 | 0.29 | 0 | 1 | 1 |
| <i>Firm Characteristics (firm)</i> | | | | | | |
| Ln(Total Assets) | Ln(000 Euros) | 7.95 | 1.62 | 2.71 | 7.76 | 18.34 |
| Capital Ratio | % | 32.61 | 20.30 | 0.02 | 29.46 | 99.73 |
| Liquidity Ratio | % | 5.37 | 8.09 | 0.00 | 2.43 | 92.59 |
| ROA | % | 3.28 | 7.79 | -50.97 | 3.49 | 47.95 |
| Bad Credit History | 0/1 | 0.24 | 0.43 | 0 | 0 | 1 |
| Ln(Age+1) | Ln(1+Years) | 2.84 | 0.64 | 0.00 | 2.94 | 6.82 |
| Tangible Assets | % | 30.63 | 23.98 | 0.00 | 25.83 | 100.00 |
| <i>Bank-Firm Relationship Characteristic (bank - firm)</i> | | | | | | |
| Ln(1+Number of months with the bank) | Ln(1+Months) | 4.34 | 1.12 | 0.00 | 4.56 | 5.78 |
| <i>Loan Characteristics (bank - firm)</i> | | | | | | |
| Maturity <1 year | 0/1 | 0.41 | 0.43 | 0 | 0 | 1 |
| Maturity 1-5 years | 0/1 | 0.32 | 0.41 | 0 | 0 | 1 |
| Collateralized Loan | 0/1 | 0.22 | 0.39 | 0 | 0 | 1 |
| Ln(Loan Amount) | Ln(000 Euros) | 4.46 | 2.09 | 0.00 | 4.69 | 14.92 |
| Firm Level | | | | | | |
| <i>Dependent Variables (firm)</i> | | | | | | |
| Δlog Commitment(2011:Q4-2012:Q4) | - | -0.24 | 0.54 | -2.52 | -0.18 | 1.86 |
| Firm Death?(2012) | 0/1 | 0.03 | 0.16 | 0 | 0 | 1 |

NOTE. -- Table A.1 contains all variable definitions. The number observations at the loan level: 326,007; at the firm level: 56,119.

TABLE 9
 LOAN AND FIRM LEVEL ANALYSIS OF THE EFFECTS ON LENDING TO NON-CONSTRUCTION OR REAL-ESTATE FIRMS OF THE CHANGE IN PROVISIONS DUE TO THE CHANGE IN THE LAW IN 2012

| Model | (1) | (2) | (3) | (4) | (5) | (6) |
|--------------------------------------------------------------------------------|--------------------------------------------|--------------------------------------------|--------------------------------------------|--------------------------------------------|--------------------------------------------|---------------------------------------|
| Level | Loan | | | | | |
| Dependent Variable | $\Delta \log$ Commitment (2011:Q4-2012:Q4) | $\Delta \log$ Commitment (2011:Q4-2012:Q4) | $\Delta \log$ Commitment (2011:Q4-2012:Q4) | $\Delta \log$ Commitment (2011:Q4-2012:Q4) | $\Delta \log$ Commitment (2011:Q4-2012:Q4) | $\Delta \log$ Drawn (2011:Q4-2012:Q4) |
| Loans to Construction & Real Estate/Total Loans to Firms(2011:Q4) _t | -0.208 *** (.045) | -0.215 *** (.043) | -0.157 *** (.044) | -0.352 *** (.053) | -0.292 *** (.058) | -0.272 *** (.047) |
| Loan Characteristics | No | No | Yes | No | No | No |
| Firm Characteristics & Province and Industry Fixed effects | -- | -- | -- | -- | Yes | -- |
| Firm Fixed Effects | Yes | -- | -- | -- | No | -- |
| Firm * Bank Type Fixed Effects | No | Yes | Yes | Yes | No | Yes |
| Sample with Firm Characteristics Only | No | No | No | Yes | Yes | No |
| Cluster | Bank, Firm | Bank, Firm | Bank, Firm | Bank, Firm | Bank, Firm | Bank, Firm |
| Number of Observations | 326,007 | 289,390 | 289,390 | 154,993 | 170,879 | 261,223 |

| Model | (7) | (8) | (9) | (10) | (11) | (12) | (13) |
|--------------------------------------------------------------------------------|-----------------|--------------------------------------------------------------|---------------------------------------------------|-----------------------------------------------------|--------------------------------------------|--------------------------------------------|--------------------|
| Level | Loan | | | | Firm | | |
| Dependent Variable | Loan Dropped? | Δ Long-Term Maturity Rate (>1 year) (2011:Q4-2012:Q4) | Δ Collateralization Rate (2011:Q4-2012:Q4) | Δ Drawn to Committed Ratio (2011:Q4-2012:Q4) | $\Delta \log$ Commitment (2011:Q4-2012:Q4) | $\Delta \log$ Commitment (2011:Q4-2012:Q4) | Firm Death? (2012) |
| Loans to Construction & Real Estate/Total Loans to Firms(2011:Q4) _t | -0.056 (.07) | -0.512 *** (.154) | 0.506 *** (.066) | -0.004 (.03) | -0.142 ** (.065) | -0.117 * (.098) | 0.035 ** (.015) |
| Loan Characteristics | Yes | Yes | Yes | Yes | No | Yes | No |
| Firm Characteristics & Province and Industry Fixed effects | -- | -- | -- | -- | Yes | Yes | Yes |
| Firm Fixed Effects | Yes | Yes | Yes | Yes | > < | > < | > < |
| Sample with Firm Characteristics Only | No | No | No | No | Yes | Yes | No |
| Cluster | Bank, Firm | Bank, Firm | Bank, Firm | Bank, Firm | Prov., Ind. | Prov., Ind. | Prov., Ind. |
| Number of Observations | 366,618 | 289,390 | 289,390 | 198,678 | 56,119 | 56,119 | 116,259 |

NOTE. -- Model 1 corresponds to Equation 3; the relevant text explains Models 1 to 10. Model 11 corresponds to Equation 4; the relevant text explains Models 11 to 13. The sample analyzed starts from the set of non-construction or real estate firms with multiple bank-firm relationships. Table 8 contains the summary statistics for each included variable and the list of variables for each set of characteristics and Table A.1 the definition of all variables. All specifications in this Table include Other Bank and Bank-Firm Relationship Characteristics in addition to those mentioned. The Ln(Loan Amount) included in the Loan Characteristics is computed for December 2010. Coefficients are listed in the first row, robust standard errors that are corrected for clustering at the indicated level are reported in the row below, and the corresponding significance levels are in the adjacent column. "Yes" indicates that the set of characteristics or fixed effects is included. "No" indicates that the set of characteristics or fixed effects is not included. "> <" indicates that the set of fixed effects cannot be included (because the regression is cross-sectional at the level of the fixed effects). "--" indicates that the indicated set of characteristics or fixed effects are comprised in the wider included set of fixed effects. *** Significant at 1%, ** significant at 5%, * significant at 10%.

TABLE 10
ANALYSIS OF THE CHANGES IN COMMITTED LENDING TO NON-CONSTRUCTION OR REAL-ESTATE FIRMS OF
THE CHANGE IN PROVISIONS DUE TO THE CHANGE IN THE LAW IN 2012 ACROSS BANKS AND FIRMS

| Model | (1) | (2) |
|-----------------------------------------------------------------------------------------------------|-----------------------|-----------------------|
| Loans to Construction & Real Estate/Total Loans to Firms(2011:Q4) _b [=CRE _b] | -0.210 ** (.092) | |
| CRE _b * Ln(Total Assets) _b | -0.028 (.046) | |
| CRE _b * Capital Ratio _b | -0.059 *** (.022) | |
| CRE _b * ROA _b | -0.153 (.157) | |
| CRE _b * Doubtful Ratio _b | 0.029 ** (.013) | |
| CRE _b * Ln(Total Assets) _f | -0.013 (.024) | -0.019 (.025) |
| CRE _b * Capital Ratio _f | 0.001 (.002) | 0.001 (.002) |
| CRE _b * ROA _f | -0.015 *** (.005) | -0.015 *** (.005) |
| CRE _b * Bad Credit History _f | 0.236 *** (.078) | 0.230 *** (.077) |
| CRE _b * Interest Paid _f | -1.262 * (.715) | -1.247 * (.721) |
| CRE _b * Ln(1+Number of months with the bank) _{bf} | 0.032 (.034) | 0.044 (.031) |
| Firm * Bank Type Fixed Effects | Yes | Yes |
| Bank Fixed effects | No | Yes |
| Cluster | Bank, Firm | Bank, Firm |
| Number of Observations | 74,364 | 74,364 |

NOTE. -- The dependent variable is the $\Delta \log$ Commitment(2011:Q4-2012:Q4). The sample analyzed is the set of firms with multiple bank-firm relationships and firm characteristics. Table A.1 contains all variable definitions. All specifications in this Table include Other Bank and Bank-Firm Relationship Characteristics in addition to those mentioned. Coefficients are listed in the first row, robust standard errors that are corrected for clustering at the indicated level are reported in the row below, and the corresponding significance levels are in the adjacent column. "Yes" indicates that the set of characteristics or fixed effects is included. *** Significant at 1%, ** significant at 5%, * significant at 10%.

FIGURE 1
 THE FLOW OF TOTAL NET LOAN LOSS PROVISIONS, IN EUROS, AND THE STOCKS OF NON-PERFORMING LOANS AND TOTAL, SPECIFIC AND GENERAL LOAN LOSS PROVISIONS OVER TOTAL LOANS, IN PERCENT

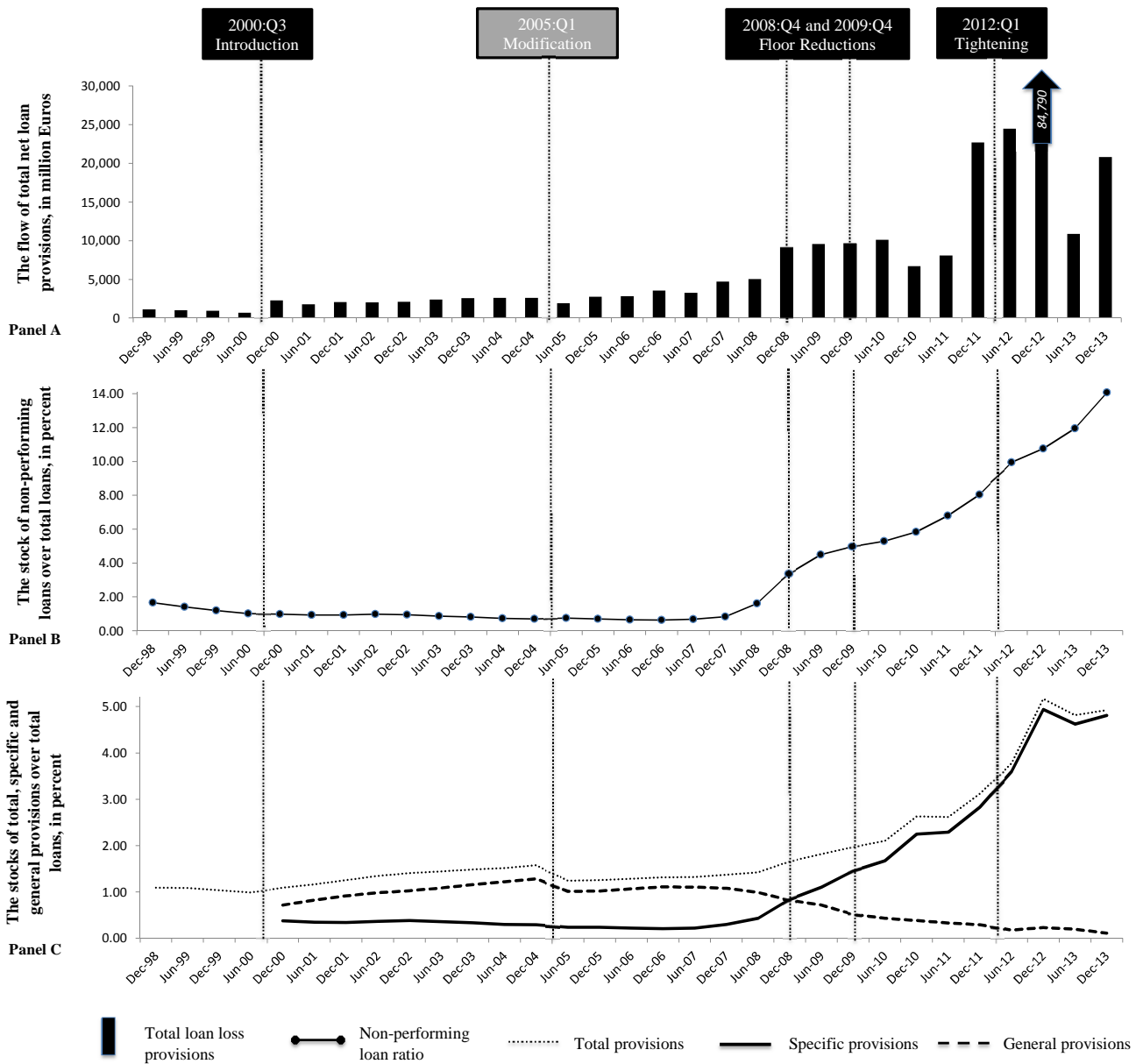
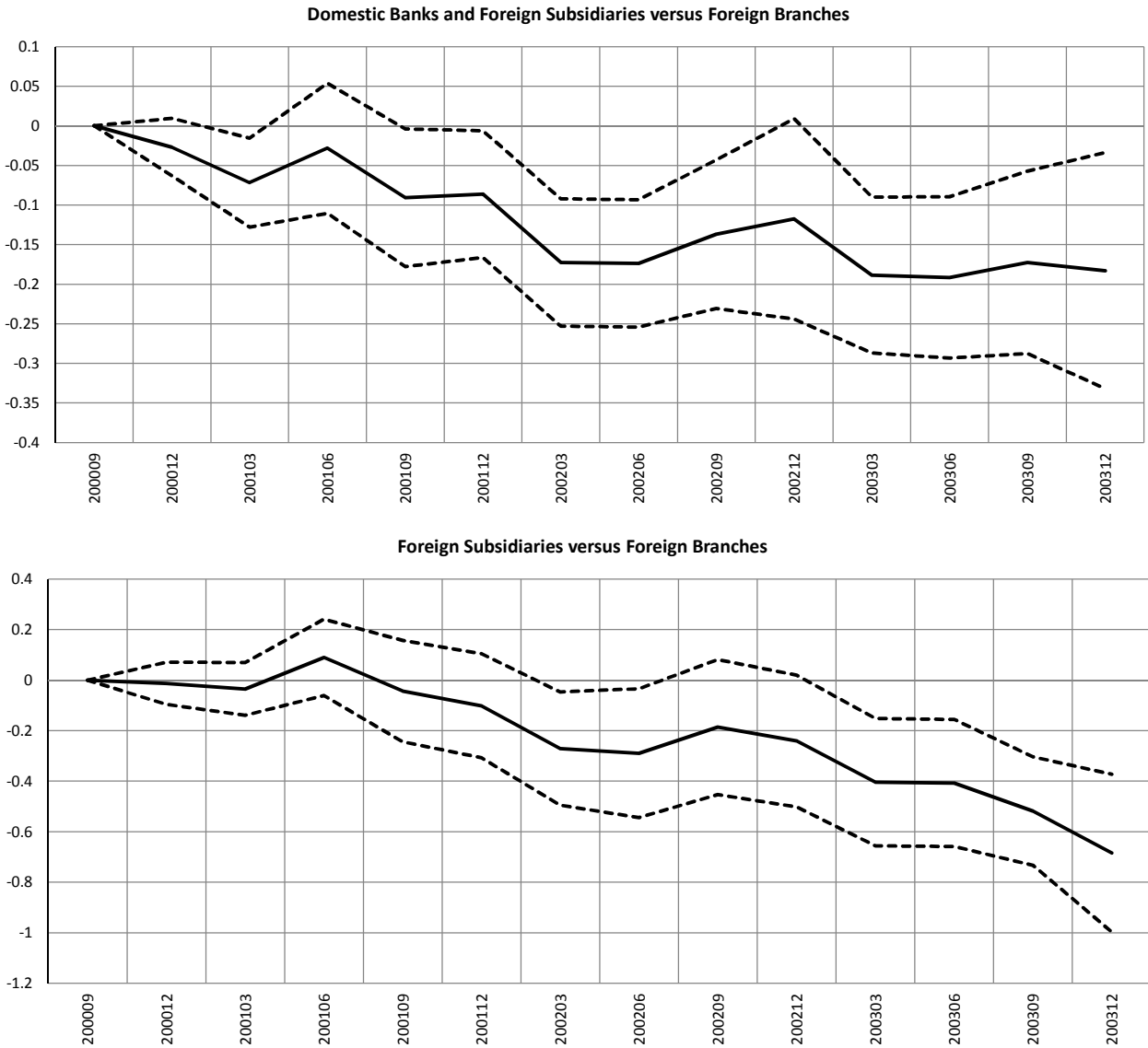


FIGURE 2
ESTIMATES OF TIME-VARYING COEFFICIENT ON THE INDEPENDENT VARIABLE DYNAMIC PROVISION FOR ΔLOG COMMITMENT



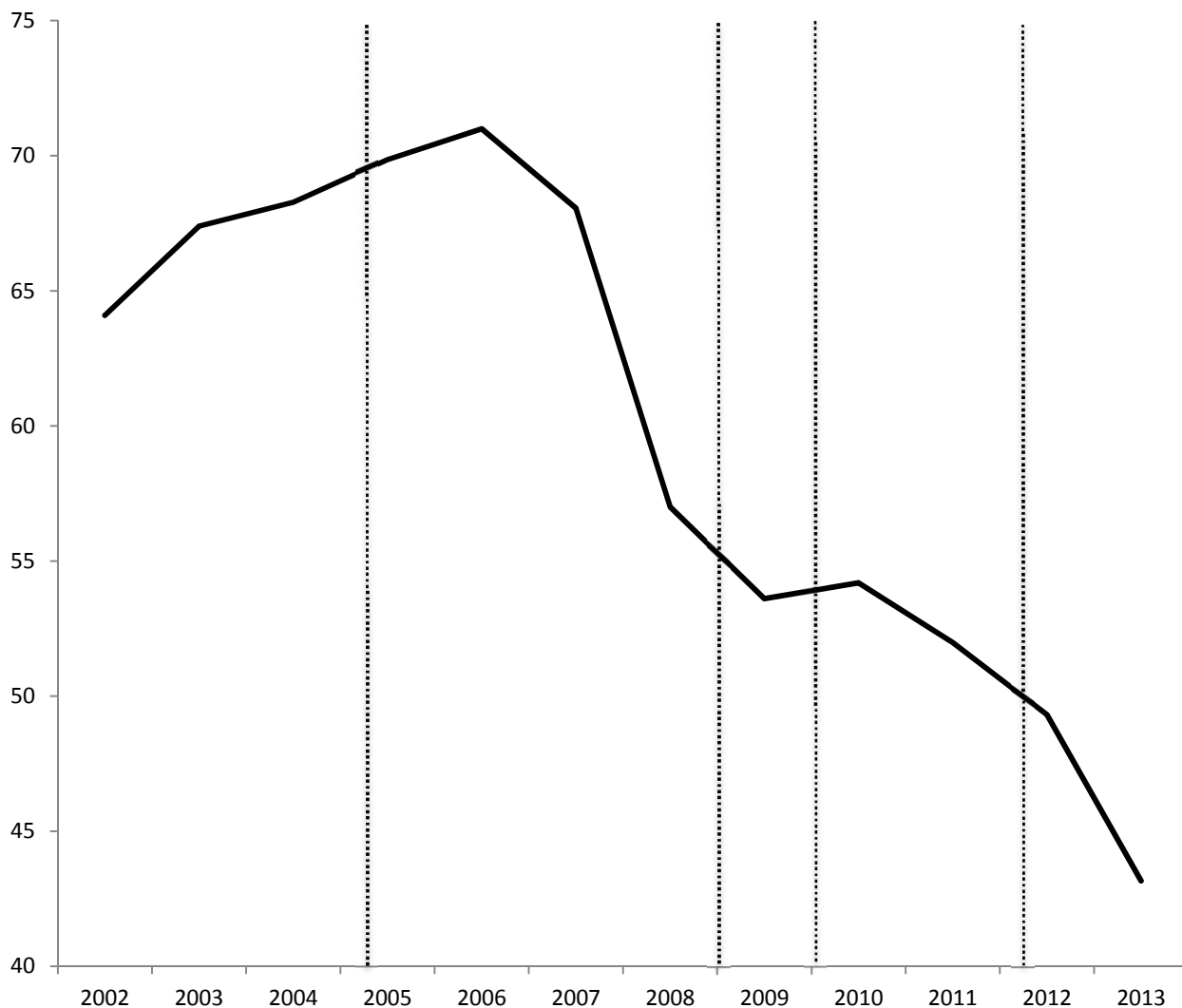
NOTE. -- The solid lines represent the coefficients of Dynamic Provision(for 1998:Q4)_b in Models 4 (at the loan level, i.e., the black lines) and 12 (at the firm level, i.e., the gray lines) in Table 2 that are estimated with rolling time windows that end or start in 2000:Q1. The dashed lines represent the ten percent confidence band drawn around the coefficient estimates.

FIGURE 3
ESTIMATES OF TIME-VARYING COEFFICIENT ON THE INDICATED GROUPS OF BANKS FOR $\Delta \text{LOG COMMITMENT}$



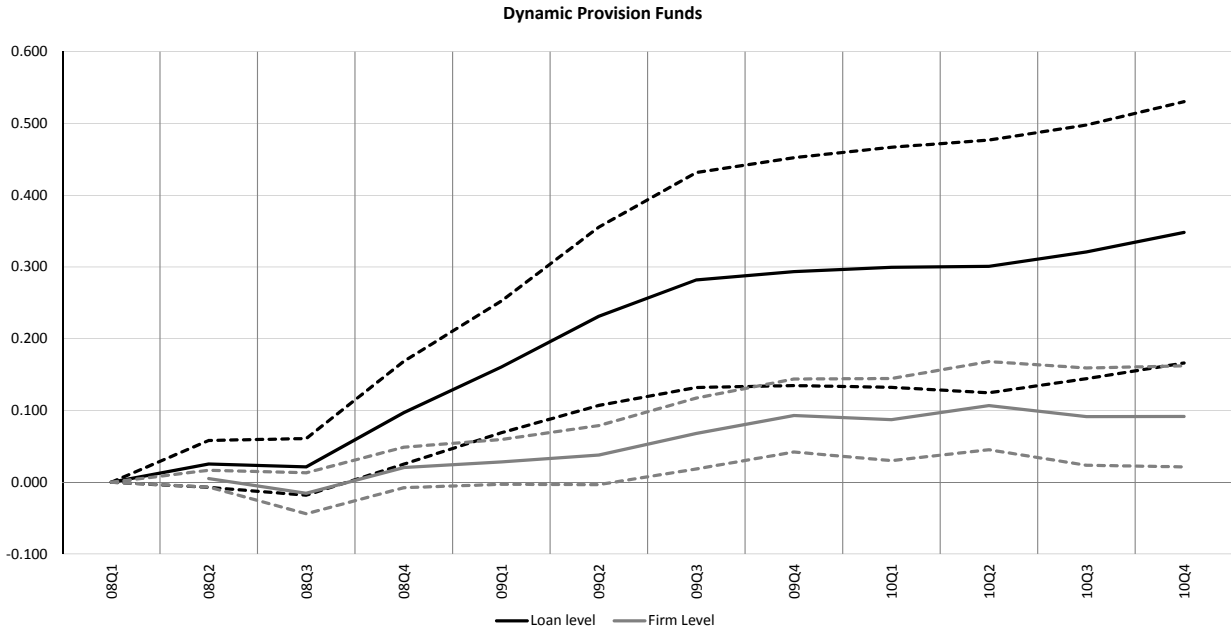
NOTE. -- The solid lines represent the estimated coefficients on the following two variables that replace Dynamic Provision (for 1998:Q4)_{it} in two models that are equivalent to Model 1 in Table 2: In the model displayed in the upper panel a dummy that equals one if the bank granting the loan is a domestic bank or a subsidiary of a foreign bank and that equals zero otherwise; and in the model displayed in the lower panel a dummy that equals one if the bank granting the loan is a subsidiary of a foreign bank and that equals zero otherwise. In the latter case the sample is restricted to the loans that are granted by either subsidiaries or branches of foreign banks. In both cases the coefficients are estimated with rolling time windows that start over the 2000:Q1 to 2000:Q3 period. The dashed lines represent the ten percent confidence band drawn around the coefficient estimates.

FIGURE 4
THE PROBABILITY ONE OR MORE LOAN APPLICATIONS ARE GRANTED BY A NON-CURRENT ("NEW") BANK



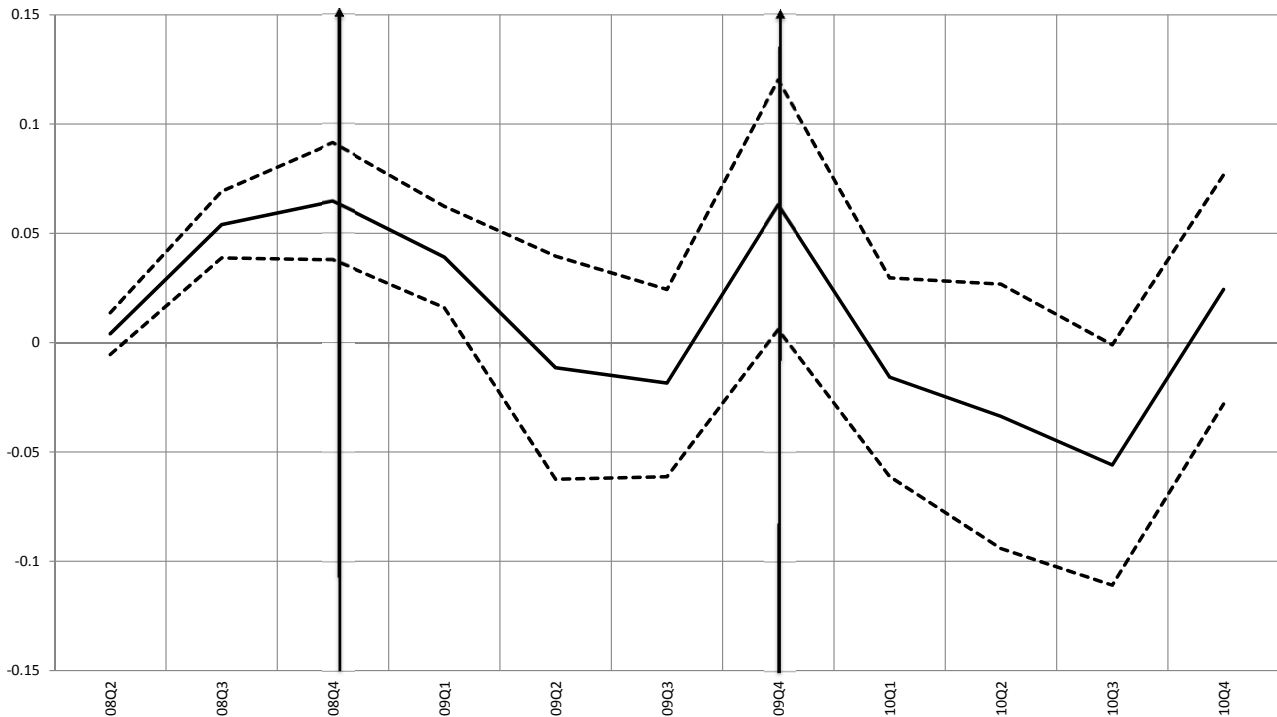
NOTE. -- The solid line represents the probability one or more loan applications by a firm to a non-current ("new") bank are granted. The dashed vertical lines represent the timing of the policy shocks.

FIGURE 5
ESTIMATES OF TIME-VARYING COEFFICIENTS ON THE INDEPENDENT VARIABLES DYNAMIC PROVISION FUNDS FOR $\Delta \text{LOG COMMITMENT}$



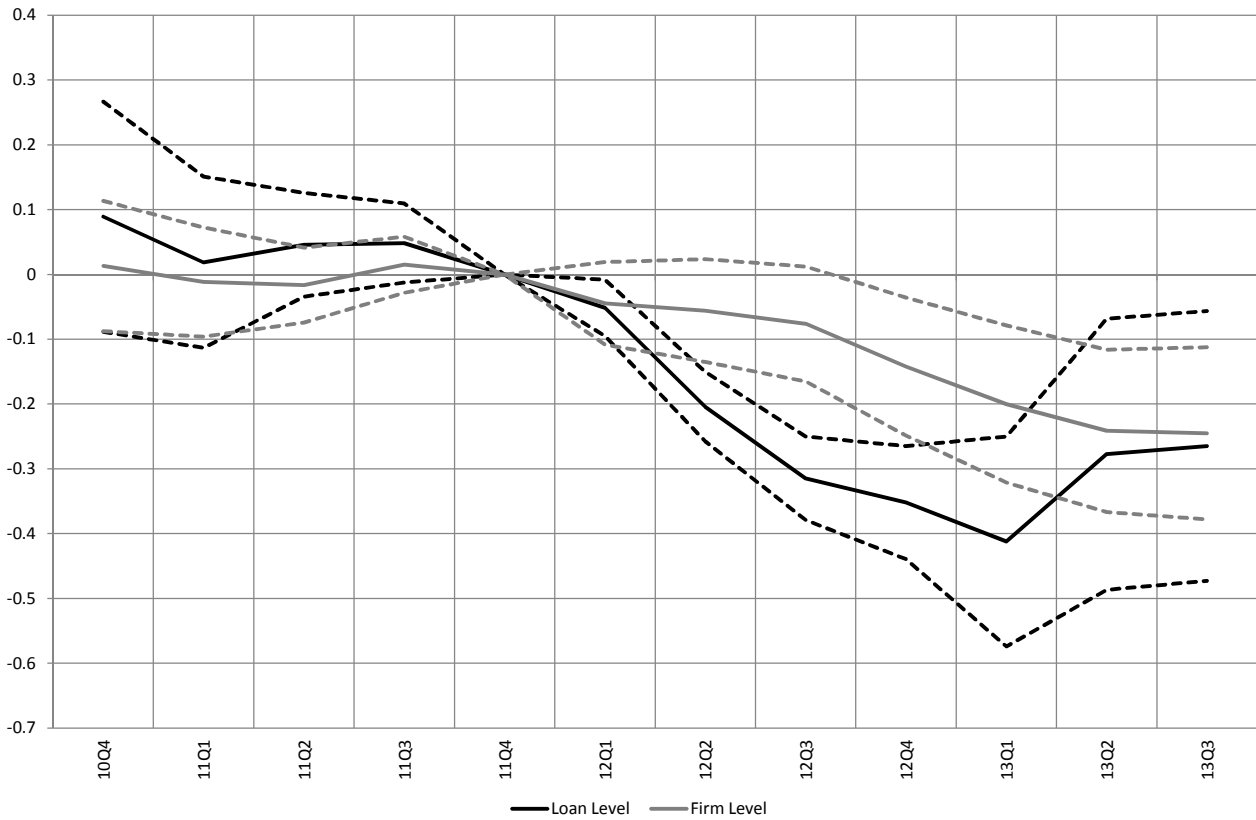
NOTE. -- The solid lines represent the coefficients of Dynamic Provision Funds(2007:Q4)_{it} in Models 4 (at the loan level, i.e., the black lines) and 12 (at the firm level, i.e., the gray lines) in Table 6 that are estimated with rolling time windows that start in 2008:Q1. The dashed lines represent the ten percent confidence band drawn around the coefficient estimates.

FIGURE 6
ESTIMATES OF TIME-VARYING COEFFICIENTS ON AN INDEPENDENT VARIABLE $d(\text{DYNAMIC PROVISION FUNDS} < 1.25)$ FOR $\Delta \text{LOG COMMITMENT}$



NOTE. -- The solid line represents the coefficients of $d(\text{Dynamic Provision Funds} < 1.25)$ _{it} in a model equivalent to Model 4 in Table 6 estimated for each quarter, for the period between 2008:Q2 and 2010:Q4, relative to 2008:Q1. $d(\text{Dynamic Provision Funds} < 1.25)$ _{it} is a dummy variable that equals one if the bank is below its ceiling in terms of Dynamic Provision Funds at the beginning of the quarter and can therefore potentially respond to the lowering of the floor on the Dynamic Provision Funds, and equals zero otherwise. The period between 2008:Q2 and 2010:Q4 includes the floor lowering from 33 to 10 percent in 2008:Q4 (announced in 2008:Q3) and the floor removal in 2009:Q4; both are indicated with vertical lines. The dashed lines represent the ten percent confidence band drawn around the coefficient estimates.

FIGURE 7
 ESTIMATES OF TIME-VARYING COEFFICIENT ON THE INDEPENDENT VARIABLE LOANS TO CONSTRUCTION AND REAL ESTATE OVER TOTAL LOANS TO FIRMS FOR $\Delta \text{LOG COMMITMENT}$



NOTE. -- The solid lines represent the coefficients of Loans to Construction & Real Estate/Total Loans to Firms(2011:Q4)_t in Models 4 (at the loan level, i.e., the black lines) and 11 (at the firm level, i.e., the gray lines) in Table 9 that are estimated with rolling time windows that end or start in 2011:Q4. The dashed lines represent the ten percent confidence band drawn around the coefficient estimates.

TABLE A.1
DEFINITIONS OF ALL DEPENDENT AND INDEPENDENT VARIABLES USED IN THE LOAN AND FIRM LEVEL ANALYSES

| Level of Analysis, Variable Type and Variable Name | Definition |
|-------------------------------------------------------------------|---------------------------------------------------------------------------------------------------------------------------------------------------------------------------------------------------------------------------------------------------------------------|
| Loan Level | |
| <i>Dependent Variables (bank - firm - period)</i> | |
| Δlog Commitment | Change in the logarithm of committed credit granted by bank b to firm i during period (t, s) |
| Δlog Drawn | Change in the logarithm of drawn credit granted by bank b to firm i during period (t, s) |
| Loan Dropped? | =1 if credit granted by bank b to firm i is ended during period (t, s), =0 otherwise |
| ΔLong-Term Maturity Rate (>1 year) | Change in the % of loan volume of maturity higher than one year by bank b to firm i during period (t, s) |
| ΔCollateralization Rate | Change in the % of collateralized loans by granted bank b to firm i during period (t, s) |
| ΔDrawn to Committed Ratio | Change in the drawn to committed credit granted by bank b to firm i during period (t, s) |
| <i>Bank Dynamic Provisioning (bank)</i> | |
| Dynamic Provision(for 1998:Q4) | Dynamic provision flows based on the new formula and applied to the loan portfolio of 1998:Q4 over total assets |
| Dynamic Provision Funds(2001:Q2) | Dynamic provision funds over total credit as of 2001:Q2 |
| Dynamic Provision Funds(2007:Q4) | Dynamic provision funds over total assets as of 2007:Q4 |
| d(Dynamic Provision Funds<1.25) | =1 if the dynamic provision funds is below 125 percent of latent loan losses and therefore not binding banks to release funds following the lowering in 2008:Q4 of the floor on dynamic provision funds over latent loan losses from 33 to 10 percent, =0 otherwise |
| Simulated Dynamic Provision Funds(2007:Q4 for 2000:Q3) | Simulated dynamic provision funds over total assets in 2007:Q4 based on the loan portfolio as of 2000:Q3 |
| Loans to Construction & Real Estate/Total Loans to Firms(2011:Q4) | Loans to construction and real estate loans over total loans as of 2011:Q4 |
| ΔLn(Specific Funds+General Funds)(2000:Q1-2001:Q2) | Percentage change in specific and general funds between 2000:Q1 and 2001:Q2 |
| ΔLn(Specific Funds+General Funds)(2007:Q4-2010:Q4) | Percentage change in specific and general funds between 2007:Q4 and 2010:Q4 |
| ΔLn(Specific Fund+General Fund)(2011:Q4 to 2012:Q4) | Percentage change in specific and general funds between 2011:Q4 and 2012:Q4 |
| <i>Other Bank Characteristics (bank)</i> | |
| Ln(Total Assets) | The logarithm of total assets of bank b at time t-1 |
| Capital Ratio | The ratio of bank equity and retained earnings over total assets of bank b at time t-1 |
| Liquidity Ratio | The ratio of current assets held by bank b over the total assets at time t-1 |
| ROA | The ratio of total net income over total assets of bank b at time t-1 |
| Doubtful Ratio | The ratio of non-performing loans over total assets of bank b at time t-1 |
| Commercial Bank | =1 if bank b is a commercial bank, =0 otherwise |
| Savings Bank | =1 if bank b is a savings bank, =0 otherwise |
| <i>Firm Characteristics (firm)</i> | |
| Ln(Total Assets) | The total assets of firm f in time t-1 |
| Capital Ratio | The ratio of own funds over total assets of firm f at time t-1 |
| Liquidity Ratio | The ratio of current assets over total assets of firm f at time t-1 |
| ROA | The ratio of the profits over total assets of firm f at time t-1 |
| Bad Credit History | = 1 if the firm f had doubtful loans before time t, =0 otherwise |
| Interest Paid | Interest expenses over debt |
| Future Default(2001-2005) | =1 if the firm f defaults in the indicated period, =0 otherwise |
| Ln(Age+1) | The log of one plus the age in years of firm f at time t-1 |
| Tangible Assets | The ratio of tangible assets over total assets of firm f at time t-1 |
| <i>Bank-Firm Relationship Characteristic (bank - firm)</i> | |
| Ln(1+Number of months with the bank) | The logarithm of one plus the duration of the lending relationship between bank b and firm f at time t-1 |
| <i>Loan Characteristics (bank - firm)</i> | |
| Maturity <1 year | % of all bank loan volume of firm i of maturity lower than 1 year at time t-1 |
| Maturity 1-5 years | % of all bank loan volume of firm i of maturity between 1 and 5 years at time t-1 |
| Collateralized Loan | % of the collateralization of all bank loan volume of firm i at time t-1 |
| Ln(Loan Amount) | The logarithm of all bank loan volume of firm i in the previous year |
| Firm Level | |
| <i>Dependent Variables (firm)</i> | |
| Δlog Commitment | Change in the logarithm of committed credit granted by all banks to firm i during period (t, s) |
| Δlog Drawn | Change in the logarithm of drawn credit granted by all banks to firm i during period (t, s) |
| Δlog Total Assets | Change in the logarithm of total assets of firm i during period (t, s) |
| Δlog Employees | Change in the logarithm of total employees of firm i during period (t, s) |
| Firm Death? | =1 if firm is liquidated during period (t, s), =0 otherwise |

NOTE. -- See Section II for details on the calculations of the Bank Dynamic Provisioning variables.